

**University of the Philippines Baguio
College of Social Sciences**



**Bachelor of Arts in Social Sciences
Student Handbook**

Prepared by:

Prof. Rainier Ric B. de la Cruz

Mr. Renz Venielle L. Lamayo

Concept and design by:

Prof. Santos Jose O. Dacanay III, Ph.D.

In coordination with the:

Office of the College Secretary, College of Social Sciences

Office of the Dean, College of Social Sciences

Office of the University Registrar, UP Baguio

All photos by:

Prof. Achilles C. Costales, Ph.D.

Table of Contents

The BASS Program	1
Program Structure	2
Courses	3
General Education Courses.....	3
Major Courses.....	4
Minor Courses.....	6
Core Courses.....	9
PE and NSTP Requirements	10
Program Checklists	11
Major in Anthropology – Minor in Philosophy	11
Major in Anthropology – Minor in Political Science	13
Major in Anthropology – Minor in Psychology.....	15
Major in Anthropology – Minor in Sociology	17
Major in Economics - Minor in Philosophy	19
Major in Economics - Minor in Political Science	21
Major in Economics - Minor in Psychology.....	23
Major in Economics - Minor in Sociology	25
Major in History - Minor in Philosophy	27
Major in History - Minor in Political Science	29
Major in History - Minor in Psychology.....	31
Major in History - Minor in Sociology	33
Program Flowcharts	35
Information on Admission	42
Course and Program Policies	46
Faculty Roster	53
Revisions and Updates	56



UNIVERSITY OF THE PHILIPPINES BAGUIO
College of Social Sciences

BA SOCIAL SCIENCES PROGRAM
Student Handbook

The College of Social Sciences came into existence on December 2, 2002 when the University of the Philippines Baguio became the seventh constituent unit of the UP System. The College, formerly known as the Division of Social Sciences, is configured into three departments, namely Economics and Political Sciences, History and Philosophy, and Social Anthropology and Psychology. It includes the Institute of Management, formerly the Management Sciences Division.

The College offers curricular, research and extension programs that are both interdisciplinary and socially engaged.

The College offers an undergraduate degree in Social Sciences following a major-minor scheme. A student of B.A. Social Sciences can choose to major in Economics, History, or Social Anthropology, and minor in Philosophy, Political Science, Psychology, or Sociology.

The Majors

Anthropology aims for a holistic study of man and culture. It seeks to understand the complexity of human beings and societies—their variations, adaptive strategies, and changes across time and space. The program fosters a deeper appreciation of cultural diversity and trains students to do anthropological research with analytic and methodological rigor.

Economics integrates a social science perspective that puts forth a holistic and humanistic, rather than a merely technical view of economic issues. It intends to produce graduates who possess fundamental skills in economic analysis. The program will cultivate a general familiarity with the political, social, and cultural context of economic behavior.

History studies the human past. Complex changes and continuities in the economic, social, political, and cultural life of a community are best understood in an interdisciplinary and integrated manner. The program equips students with various methodologies in research and writing history. It also aims to develop a global outlook that is grounded in nationalism and local knowledge.

The Minors

Philosophy inquires into the fundamental questions about the world, knowledge, and the human condition. The program provides basic proficiency in the history of philosophy and the main areas of philosophical inquiry, as well as skills and competencies necessary for philosophical research. Its mode of philosophizing mediates local experiences and sources with universal thinking, and is in dialogue with the natural and social sciences, the humanities and the arts.

Political Science teaches its practitioners both the questions that political scientists ask in their attempt to understand politics and the manner of asking them. It develops independent and critical thinking on the application of concepts to current political events.

Psychology introduces the student to the study of behavior and mental life, the investigation of the causes and dynamics of behavioral patterns and provides the students with knowledge, skills, and techniques for solutions of individual problems.

Sociology studies humans in various levels of group life, from the smallest dyad to the largest of social organizations, the society. The discipline hinges on an intellectual tradition that continues to be shaped by attempts to understand order and change in society.

PROGRAM STRUCTURE

The BASS Program requires a total of 121-133 units, depending on the chosen major and minor combination. Students are required to take 36-39 units of the major courses, 24-27 units of the minors, and 19 units of the social science core courses. The program also requires 36 units of General Education courses and 6-12 units of other required courses.

GE Courses (36 units)

SSP GE Courses	12 units
AH GE Courses	12 units
NSM GE Courses	12 units

Social Science Core Courses (19 units)

Social Science 100	3 units
Social Science 101	4 units
Social Science 180	3 units
Social Science 197	3 units
Social Science 198	3 units
Social Science 199	3 units

Other Required Courses (6-12 units)

P.I. 100*	3 units
Communication 11/ Komunikasyon 11*	3 units
Math 100**	4 units
Foreign Language 1.1***	3 units
Foreign Language 1.2***	3 units

*Required for all BASS majors.

**Required for BASS Economics majors only.

***Required for BASS History majors only.

Major Concentration: Economics (36 units)

Required Economics Courses 30 units

Economics 101	4 units
Economics 102	4 units
Economics 106	3 units
Economics 121	3 units
Economics 131	4 units
Economics 141	3 units
Economics 151	3 units
Economics 191	3 units
Economics 200	3 units

Economics elective (6 units)

Any of the following: Economics 109, 110, 116, 142, 152, 161, 171, 181, 189, 194, 195, 198

Major Concentration: History (39 units)

Required History Courses 33 units

History 100	3 units
History 102	3 units
History 112	3 units
History 113	3 units
History 114	3 units
History 117	3 units
History 119	3 units
History 151	3 units
History 154	3 units
History 199	3 units
History 200	3 units

History elective (6 units)

Any of the following: History 106, 110, 115, 116, 120, 140, 141, 168, 198

Major Concentration: Anthropology (36 units)

Required Anthropology Courses 33 units

Anthropology 100	3 units
Anthropology 104	3 units
Anthropology 113	3 units
Anthropology 119	3 units
Anthropology 132	3 units
Anthropology 170	3 units
Anthropology 173	3 units
Anthropology 179	3 units
Anthropology 192	3 units
Anthropology 199	3 units
Anthropology 200	3 units

Anthropology elective (3 units)

Any of the following: Anthropology 133, 141, 151, 161, 181, 182, 198

Minor: Philosophy (27 units)

Required Philosophy Courses 24 units

Philosophy 11	3 units
Philosophy 110	3 units
Philosophy 111	3 units
Philosophy 112	3 units
Philosophy 113	3 units
Philosophy 130	3 units
Philosophy 150	3 units
Philosophy 171	3 units

Philosophy elective (3 units)

Any of the following: Philosophy 125, 126, 170, 177, 194, 198

Minor: Political Science (24 units)	
Required Political Science Courses	18 units
Political Science 100	3 units
Political Science 150	3 units
Political Science 160	3 units
Political Science 178	3 units
Political Science 182	3 units
Political Science 192	3 units

Political Science electives (6 units)
Any of the following: Political Science 151, 152, 153, 161, 163, 171, 172, 177, 179, 183, 185, 186, 190, 193, 194, 197, 198

Minor: Psychology (24 units)	
Required Psychology Courses	15 units
Psychology 101	3 units
Psychology 140	3 units
Psychology 150	3 units
Psychology 155	3 units
Psychology 180	3 units

Psychology electives (9 units)
Any of the following: Psychology 115, 135, 145, 160, 162, 163, 171, 172, 181, 182, 195, or any upper division course in the Social Sciences recommended by the discipline

Minor: Sociology (24 units)	
Required Sociology Courses	21 units
Sociology 101	3 units
Sociology 114	3 units
Sociology 132	3 units
Sociology 142	3 units
Sociology 153	3 units
Sociology 160	3 units
Sociology 195	3 units

Sociology elective (3 units)
Any of the following: Sociology 102, 109, 119, 125, 126, 198, 199

NEW GENERAL EDUCATION COURSES

SOCIAL SCIENCES AND PHILOSOPHY DOMAIN

Kasaysayan 1. Kasaysayan ng Pilipinas. Ang pampulutika, pang-ekonomiya, panlipunan, at pangkalinangangpagsulong ng Pilipinas. 3u.

Ethics 1. Ethics and Moral Reasoning in Everyday Life. The nature and development, sources and frameworks of ethics and moral reasoning and their application to various issues and contexts. 3u.

Self and Society 1. Understanding the self by examining the interaction of biological, psychological and socio-cultural dimensions and appreciating human agency and the emergence of the self in different social contexts. 3u.

NATURAL SCIENCES AND MATHEMATICS DOMAIN

Science 10 Probing the Physical World. Understanding the origin of the universe, synthesis of the elements, formation of the earth and the various critical issues affecting our world view and our planet through the methods and interconnected concepts of the physical sciences. 3 u

Science 11 Living Systems: Concepts and Dynamics. Principles, interactions, and contemporary issues concerning living systems. 3u

STS 1 Science, Technology and Society. Analyses of the past, present and future of science and technology in society (including their nature, scope, role and function) and the social, cultural, political, economic and environmental factors affecting the development of science and technology, with emphasis on the Philippine setting. 3u

ARTS AND HUMANITIES DOMAIN

Arts I Critical Perspectives in the Arts. A critical study of the experience, language, and the context of art. 3u

Comm 11 Critical Perspectives in Communication. Theories and frameworks of communication in various contexts. 3u

Wika 1 Wika, Kultura at Lipunan. Pagsusuri sa ugnayan ng wika, kultura at lipunan. 3u

MAJOR COURSES

ANTHROPOLOGY

Required Courses (33 units)

Anthropology 100 General Anthropology. Physical origins of man, his evolutionary development, nature of culture, and structure of social behavior. 3u.

Anthropology 104 Human Evolution. Fossil & cultural evidence of human evolution. Prerequisite: Anthro 100. 3u.

Anthropology 113 Introduction to Philippine Archeology. General theory and concepts in archaeology, and an outline of world prehistory with focus on the Philippines. 3u.

Anthropology 119 Introduction to Museology. Principles, methods and application. 3u

Anthropology 132 Introduction to Ecological Anthropology. Relation between behavior and environmental phenomena. Prerequisite: Anthro 100. 3u.

Anthropology 170 Language and Culture. Relation between language and culture. 3u

Anthropology 173 Introduction to Urban Anthropology. Anthropological perspective of urban societies. 3u.

Anthropology 179 Culture Change and Applied Anthropology. Processes of unplanned and planned changes. Prerequisite: SS. 3u

Anthropology 192 Introduction to Anthropological Theory. Development of anthropological thought. Prerequisite: Anthro 100. 3u

Anthropology 199 Field Methods. Prerequisite: Anthro 192. 3u.

Anthropology 200 Bachelor's Thesis. Prerequisite: Soc Sci 199. 3u

Anthropology Electives (Choose 1 for a total of 3 units)

Anthropology 133. Economic Anthropology. Economic behavior of pre-industrial peoples and peasant economies (crosslisted with Econ 194). 3u.

Anthropology 141. Introduction to Political Anthropology. Problems of sanction and law, social control and government of pre-industrial societies. 3u.

Anthropology 151 Comparative Religion. Studies of religious concepts, practices, and cultural expressions of religious systems. 3u.

Anthropology 161 Introduction to Folklore. Oral and traditional literature of representative cultures of the world. 3u.

Anthropology 181 Social Anthropology. Concepts, theories and present-day implications of social anthropology. 3u

Anthropology 182 Culture and Personality. Role of culture in personality development. 3u

Anthropology 198 Special Topics. 3u

ECONOMICS

Required Courses (30 units)

Economics 101 Macroeconomics. National income accounting; consumption & investment decisions; income and employment determination; monetary and fiscal policies; international policy; growth.

Economics 102 Microeconomics. Demand and supply; price determination in competitive markets; income distribution; general equilibrium and welfare.

Economics 106 Elements of Mathematical Economics. Mathematical approaches to elementary economic theory. Prerequisite: Econ 101, 102; Math 100. 3u.

Economics 121 Monetary Economics. Nature and role of money; banks and other financial intermediaries; central banking and banking regulations; open economy issues; efficient markets theory; development finance. Prerequisite: Econ 101, 102. 3u.

Economics 131 Introduction to Quantitative Economics

Representation of economic phenomena in terms of elementary mathematical and statistical models. Prerequisite: Econ 101, 102; Math 100; Soc Sci 101. 4 u.

Economics 141 International Economics. International trade and finance; commercial policy and the macroeconomics of an open economy. Prerequisite: Econ 101, 102. 3u.

Economics 151 Public Economics. Market failure; collective choice; theory of government expenditures and taxation. Prerequisite: Econ 101, 102. 3u.

Economics 191 Development Economics. Theories and problems of economic development; survey of the development experience in low-income and high-income countries. Prerequisite: Econ 101, 102. 3u.

Economics 200 Bachelor's Thesis. Prerequisite: Senior Standing, Soc Sci 199. 3u.

Economics Electives (any two of the following to total 6 units)

Economics 109 History of Economic Thought. Evolution of basic economic ideas and their social and intellectual context. Prerequisite: Econ 101, 102. 3u.

Economics 110 Methods of Economic History. The study of the history and current status of economic systems, with focus on the tools of socio-economic analysis. Prerequisite: Econ 101, 102. 3u.

Economics 116 The Economies of Asia. A regional survey. Prerequisite: Econ 101, 102. 3u.

Economics 142 International Trade Policies. Problems and policies in international commerce; tariffs and controls; international agreements and organizations. Prerequisite: Econ 141/COI. 3u.

Economics 152 Taxation and Fiscal Policy. Tax policy and other fiscal policies for economic stability and growth. Prerequisite: Econ 151/COI. 3u.

Economics 161 Industrial Organization. Firm and industry behavior under different market conditions; public policies toward business. Prerequisite: Econ 101, 102. 3u.

Economics 171 Economics of Agriculture. Agriculture in strategies for economic development; economics of rural institutions;

analysis of agricultural policy. Prerequisite: Econ 101, 102. 3u.

Economics 181 Labor Economics. Determinants of wage levels and wage structure; employment; non-wage aspects of employment; aspects of human capital theory. Prerequisite: Econ 101, 102. 3u.

Economics 189 Comparative Economic Systems. Analysis and comparison of theoretical and existing systems. Prerequisite: Econ 101, 102. 3u.

Economics 194 Economic Anthropology. The chief conceptual and empirical features of tribal (non-monetary) and peasant (simple monetary) economies are isolated and defined in order to understand how traditional economies function, the place of the economy in their social system, and their characteristic responses to the spread of monetary and industrial economy. Prerequisite: Econ 101, 102. 3 u.

Economics 195 Reading Course in Economics. Individual work on special topics not included in the announced course offerings. Prerequisite: Econ 101, 102. 3u. May be taken twice.

Economics 198 Special Topics in Economics. Prerequisite: Econ 101, 102. 3u. May be taken twice provided the topics are not identical.

HISTORY

Required Courses (33 units)

History 100 Introduction to World Civilizations. The historical development of world civilizations from ancient times to the present with emphasis on the growth and influence of basic ideals and institutions which have shaped mankind and the chief political, economic, social, and cultural movements. 3u.

History 102 Modern Europe. From the 16th century to the post-World War II period. 3u.

History 112 Economic History of the Philippines. History of economic activities and institutions in the Philippines from pre-colonial period to the present. 3u.

History 113 Political History of the Philippines. Historical development of the Philippine state and society. 3u.

History 114 Cultural History of the Philippines. The literary, artistic, and intellectual history of the Philippines from the Spanish period to the present. 3u.

History 117 History of the Cordillera and Northern Luzon. Political, economic and socio-cultural development of the Cordillera, Cagayan and Ilocos region. 3u.

History 119 History of Indigenous Peoples/Ethnic Minorities in Southeast Asia. Comparative history of the indigenous peoples/ethnic minorities in Southeast Asia. 3u.

History 151 History of East Asia. History of China, Korea and Japan from their pre-historic origins to the present. 3u.

History 154 History of Southeast Asia. History of Southeast Asia from the pre-colonial to the post-colonial period. 3u.

History 199 Historical Methodology. Principles, methods, and problems of historical research and writing. 3u.

History 200 Bachelor's Thesis. Prerequisite: History 199, Social Science 199, Senior Standing. 3u.

History Electives (choose two for a total of 6 units)

History 106 History of Spain. The historical development of Spain from the reign of King Charles I of Hapsburg dynasty of 1898. 3u.

History 110 Colonial Philippines I. The Philippines under Spain. 3u.

History 115 Philippine Revolution. The Philippine Revolution and the Philippine-American War. 3u.

History 116 Philippine Nationalism. The growth and development of nationalism in the Philippines. 3u.

History 120 Directed Readings in Philippine History. Selected readings, discussions, and papers, based on primary sources, from the Spanish period to the present. 3u.

History 140 The Philippines and the Third World. A general historical survey of selected Third World countries and their political, economic, social, and cultural developments. 3u.

History 141 History of Latin America. A general historical survey of Latin American countries and their political, economic, social, and cultural developments. 3u.

History 168 History of the United States. Significant historical developments and forces that brought about the making of the United States with emphasis on its emergence as a highly industrialized nation and a neo-colonial power, and its impact and relations with the developed and underdeveloped countries including the Philippines. 3u.

History 198 Special Topics in History. Principles, methods, and problems of historical research and writing. 3u.

MINOR COURSES

PHILOSOPHY

Required Courses (27 units)

Philosophy 11 Logic. Techniques of formal deduction within the scope of sentential and predicate logic. 3u.

Philosophy 110 Ancient Philosophy. Major philosophical ideas from pre-Socratics to the Neo-Platonists. 3u.

Philosophy 111 Medieval Philosophy. Major philosophical ideas from St. Augustine to William of Ockham. 3u.

Philosophy 112 Modern Philosophy. Major philosophical ideas from the rationalists to the German and British idealists. 3u.

Philosophy 113 Contemporary Philosophy. Major philosophical ideas from the logical positivists to the present. 3u.

Philosophy 130 Metaphysics. Nature of metaphysical inquiry, various categories of reality and world views. 3u.

Philosophy 150 Epistemology. Problems concerning the sources, nature and validation of knowledge. 3u.

Philosophy 171 Ethics. Problems and theories of moral values. 3u.

Philosophy Electives (choose one)

Philosophy 125 Indian Philosophy. Indian philosophy from the Vedic samhitas to the six Hindu darsanas. 3u.

Philosophy 126 Chinese Philosophy. Philosophies of China, from Confucius to Hu Shih. 3u.

Philosophy 170 Philosophy of Man. Philosophical theories of man. 3u.

Philosophy 177 Issues in Filipino Philosophy. 3u.

Philosophy 194 Directed Readings in Philosophy. Exegesis of primary texts in the history of philosophy. Prerequisite: Junior Standing/COI. 3u.

Philosophy 198 Special Problems. Prerequisite: Senior Standing. May be taken twice. 3u.

POLITICAL SCIENCE

Required Courses (18 units)

Political Science 100 Approaches to Understanding Political Phenomena. Introduction to the various theoretical frameworks and approaches used in understanding politics. 3u.

Political Science 150 Philippine National and Local Administration. Principles, practices, and problems of public administration; historical, behavioral, and institutional analysis and evaluation of the national and local bureaucracy and administration in the Philippines. Prerequisite: Pol Sci 100. 3u.

Political Science 160 Society, Politics and Government. Society as the matrix of politics; political power and leadership; patterns of decision-making; political modernization and development. Prerequisite: Pol Sci 100. 3u.

Political Science 178 Government and Politics in Southeast Asia. Political systems of Burma, Thailand, Laos, Cambodia, Vietnam, Malaysia, Singapore and Indonesia. Prerequisite: Pol Sci 100. 3u.

Political Science 182 International Politics. Interplay on the political forces in the international system; national power, national interest and goals,

and settlement of international disputes. Prerequisite: Pol Sci 100. 3u.

Political Science 192 Ancient and Medieval Political Theory. Political thought from Plato to the Medieval thinkers. Prerequisite: Senior Standing. 3u.

Political Science Electives (choose two for a total of 6 units)

Political Science 151 The Philippine Executive. The national executive in the Philippines; its nature and development. Prerequisite: Pol Sci 100. 3u.

Political Science 152 Philippine Legislative System. Structure and functions of the legislative system in the Philippines; legislative behavior and legislative process; stature and bill drafting; executive and judicial lawmaking. Prerequisite: Pol Sci 100. 3u.

Political Science 153 Political Science 153: The Philippine Judicial System. Role of courts and other law enforcement agencies in the administration of justice. Prerequisite: Pol Sci 100. 3u.

Political Science 161 Political Parties and Interest Groups. The types and structures of political parties and interest groups their function in the political system; their strategy and tactics, particularly in aggregating and articulating interests and controlling governmental power and public policy. Prerequisite: Pol Sci 100. 3u.

Political Science 163 Political Behavior; Processes and Movements. Belief systems; nature and development of political processes and movements. Prerequisite: Political Science 160/COI. 3u.

Political Science 171 American Government and Politics. Theory and dynamics of the government and politics of the United States. Prerequisite: Pol Sci 100. 3u.

Political Science 172 Government and Politics of Selected European States. Political systems of selected European states and the European Union. Prerequisite: Pol Sci 100. 3u.

Political Science 177 Government and Politics of East Asia. Political systems of Japan, People's Republic of China, North Korea, Republic of China and the Republic of South Korea. Prerequisite: Pol Sci 100. 3u.

Political Science 179 Government and Politics of South Asia. Political systems of India, Pakistan, Bangladesh, Sri Lanka, Afghanistan and Nepal. Prerequisite: Pol Sci 100. 3u.

Political Science 183 International Organizations. Development, structures, functions, and problems of international organizations. Prerequisite: Pol Sci 182. 3u.

Political Science 185 Public International Law. Nature, development, sources, principles and problems of international law and its role in the development of a world community; selected cases. Prerequisite: Pol Sci 182. 3u.

Political Science 186 Private International Law. Selected cases involving citizens or juridical entities of different states. Prerequisite: Pol Sci 182. 3u.

Political Science 190 Practicum. Special problems in political science. Prerequisite: Junior Standing. 3u.

Political Science 193 Modern Political Theory. Political thought after Machiavelli, with emphasis on the contemporary. Prerequisite: Senior Standing. 3u.

Political Science 194 American Political Theory. Political and social ideas of leading American statesmen, publicists, and other thinkers from the colonial period to the present and their influence upon American democracy. Prerequisite: Pol Sci 171/COI. 3u.

Political Science 197 Directed Study in Political Science. A student-initiated reading and/or research course, taken with a professor of the student's choice who is able and willing to direct either more extensive or more intensive study of a special topic in political science. Prerequisite: Senior Standing. 3u.

Political Science 198 Special Topics. Prerequisite: Senior Standing. 3u.

PSYCHOLOGY

Required Courses (15 units)

Psychology 101 General Psychology. The empirical and conceptual foundations of psychology in its main fields. Primarily for students who desire an intensive preparation for the more advanced courses in Psychology. 3u.

Psychology 140 Behavior Analysis. Basic behavioral process in terms of experimental learning theory. Prerequisite: Psych 11/101/written COI. 3u.

Psychology 150 Personality. Systematic approaches to the understanding of personality formation and dynamics. Prerequisite: Psych 11/101/written COI. 3u.

Psychology 155 Abnormal Behavior. Prerequisite: Psych 140, 150/COI. 3u.

Psychology 180 Social Psychology. Experimental investigation of group behavior, emotions, motivations and personality dynamics in social behavior and social learning, and perception in small groups and in cultural contexts. Prerequisite: Psych 150/COI. 3u.

Psychology Electives (choose 3 for a total of 9 units)

Psychology 115 Experimental Psychology. Principles of experimental inference; experimental design in behavior research. Prerequisite: Soc Sci 101. 9h (3 lec, 6 lab). 5u.

Psychology 135 Perception. Principles of perception in the major sense modalities; methods of investigation. Prerequisite: Psych 11/101/written COI. 3u.

Psychology 145 Psychology of Language. Psych 140/ COI. 3u.

Psychology 160 Physiological Psychology. Prerequisite: Senior Standing. 6h (3 lec, 3 lab). 4u.

Psychology 162 Psychological Measurement. Theory and applications. Prerequisite: Stat course, Psych 115, 150/COI. 6h (3 lec, 3 lab). 4u.

Psychology 163 Psychological Interview. Prerequisite: Psych 150/COI. 3u.

Psychology 171 Child Psychology. A systematic study of the behavior of normal children with emphasis on socialization and personality development. Prerequisite: Psych 150/COI. 3u.

Psychology 172 Adolescent Psychology. Human development during the period of adolescence in

the areas of physical, cognitive, emotional, and moral development. Prerequisite: Psych 150. 3u.

Psychology 181 Special Topics in Group Dynamics. 3u.

Psychology 182 Filipino Psychology. Concepts and methods in the field of culture and psychology, giving meaning to psychological reality based on the language and worldview of the Filipino. Prerequisite: Psych 150, 180. 3u.

Psychology 195 Special Topics in Psychology. Prerequisite: Senior Standing. 3u. May be taken twice provided the topics are not identical.

SOCIOLOGY

Required Courses (21 units)

Sociology 101 General Sociology. Theoretical and conceptual concerns of the field of sociology and the various techniques in the study of social realities. 3u

Sociology 114 The Philippine Social System. Analysis of the social structure of Philippine society. Prerequisite: Socio 101/equivalent. 3u

Sociology 132 Sociology of Deviant Behavior. Analysis of departures from model societal patterns & the relevant group processes including mechanisms of social control. Prerequisite: Socio 101/equivalent. 3u.

Sociology 142 Sociology of Mass Communication. Processes of opinion formation & change in relation to personality & social structure, analysis of flow of public communication through society & impact of mass communication on particular audiences. Prerequisite: Socio 101/equivalent. 3u.

Sociology 153 Sociology of Development. The nature and problems of development as a form of social change. Prerequisite: Socio 101/equivalent, Socio 195. 3u.

Sociology 160 Society & Population. Description & analysis of population aggregates; world population growth, population problems, & theories; the inter-relation of population & social structure. Prerequisite: Socio 101/equivalent. 3u.

Sociology 195 Sociological Theories. Backgrounds and trends of sociological thought from Comte to present. Prerequisite: Socio 101/equivalent. 3u.

Sociology Electives (Choose 1 for a total of 3 units)

Sociology 102 Social Organization. Analysis of the forms of social organization in simple & complex societies; principles of integration & disintegration of social groups. Prereq: Socio 101/equivalent. 3u.

Sociology 109 Comparative Social Structure. Prerequisite: Socio 101/equivalent. 3u.

Sociology 119 Industrial Sociology. Formal & informal organization in the industrial setting; analysis of work groups & their relations to the community & larger society. Prerequisite: Socio 101/equivalent. 3u.

Sociology 125 Sociology of Religion. Analysis of forms of religious beliefs & commitments; examination of religious phenomena as products of society. Prerequisite: Socio 101/ equivalent. 3u.

Sociology 126 Urban Sociology. Comparative studies of urban communities; nature & consequences of urbanization. Prerequisite: Socio 101/equivalent. 3u.

Sociology 198 Special Topics in Sociology. Prerequisite: Socio 101/equivalent. 3u.

Sociology 199 Methods of Sociological Research. Prerequisite: Socio 195, SS 101. 3u.

CORE COURSES

Social Science 100 Historical Context of the Social Sciences. An interdisciplinary study of the historical development of the social sciences. 3u.

Social Science 101 Fundamental Statistics for the Social Sciences. Basic statistical concepts and tools for social science measurements.4u.

Social Science 180 Epistemological Issues in the Social Sciences. Prerequisite: Senior Standing. 3u.

Social Science 197 Ontology of the Social. Theories and conceptions of the objects of social-scientific theorizing, including, among others, subjectivity, institution, social system, social structure, societal collectivity, etc. Prerequisite: Junior Standing. 3u.

Social Science 198 Special Topics. Prerequisite: Senior Standing.

Social Science 199 Seminar on Social Science Methodology. Methodical issues in social science research. Prerequisite: Social Science 101/Psychology 110. 3u.

OTHER REQUIRED COURSES:

Math 100 Introduction to Calculus (For Economics Major only). Limits; derivatives; integrals; applications. Prerequisite: Math 17/COI. 4u.

Philippine Institutions 100 The Life & Works of Rizal. The significance of the life & writings of Rizal in the life of the Filipino people. Prerequisite: JS. 3u.

PE AND NSTP REQUIREMENTS

PE Requirements

Basic Physical Education is a prerequisite for graduation. All students should comply with this requirement during their freshman and sophomore years.

Eight units of PE are required of all undergraduates, except for the following:

1. Students who hold the Associate in Arts or Bachelor's degree;
2. Those who are 30 years old or more;
3. Veterans of the armed forces, navy or air force;
4. Those who have served on a full-time basis for at least 2 years in the armed forces, navy, or air force.

The required PE courses are PE 1 and any three courses classified as PE 2, 3, or 4, provided the PE 2 or 3 courses are for different activities.

- PE 1 Foundation of Physical Fitness
- PE 2 Physical education activities (beginners)
- PE 3 Physical education activities (advanced)
- PE 4 Physical education exclusively for Varsity athletes

NSTP Guidelines

Starting AY 2002-2003, all incoming freshmen, male and female, enrolled in any baccalaureate program of the university, shall be required to complete six (6) units in one (1) NSTP component of their choice as a graduation requirement.

Program Components

A student can choose from the following components: Reserve Officers Training Corps (ROTC); Literacy Training Service (LTS); and Civic Welfare Training Service (CWTS).

LTS refers to the component designed to teach literacy and numeracy skills to school children, out-of-school youth, and other sectors of society in need of these services.

CWTS refers to the component or activities contributory to general welfare and betterment of life or enhancement of community facilities, especially those devoted to improving health, education, environment, entrepreneurship, safety, recreation, and morale of the citizenry and other social services.

Duration and Equivalent Course Unit

Each NSTP component shall be undertaken for a period of two (2) semesters, with fifty-four (54) training hours per semester and given a credit of 3.0 units per semester. An official form for the purpose of reporting completion of NSTP shall be provided by the College.

A one (1) summer program in lieu of the two (2) semester program may be taken except in the case of ROTC which will need coordination with the AFP.

The successful completion of the NSTP requirement is a prerequisite for graduation.

Social Sciences Program Checklist

Major Concentration: Anthropology Minor Discipline: Philosophy

FIRST YEAR							
First Semester	Units	Sem & AY Taken	Grade	Second Semester	Units	Sem & AY Taken	Grade
GE 1 – SSP I (Kas 1/Hist I)	3			GE 5 – AH II (Comm 10)	3		
GE 2 – AH I (Wika 1)	3			GE 6 – SSP III (Ethics 1)	3		
GE 3 – NSM I (Science 10)	3			GE 7 – NSM II (Science 11)	3		
GE 4 – SSP II (SAS 1)	3			GE 8 – AH III (Arts I)	3		
Anthropology 100	3			Anthropology 104	3		
PE 1	(2)			P.E. 2*	(2)		
Total	15			Total	15		

SECOND YEAR							
First Semester	Units	Sem & AY Taken	Grade	Second Semester	Units	Sem & AY Taken	Grade
Comm 11/ Komm11	3			GE 10 – AH IV (Elective)	3		
GE 9 – NSM III (STS 1)	3			Social Science 100	3		
Anthropology 170	3			Social Science 101	4		
Philosophy 11	3			Anthropology 192	3		
Philosophy 110	3			Philosophy 111	3		
P.E. 2*	(2)			P.E. 2*	(2)		
NSTP 1	(3)			NSTP 2	(3)		
Total	15			Total	16		

THIRD YEAR							
First Semester	Units	Sem & AY Taken	Grade	Second Semester	Units	Sem & AY Taken	Grade
GE 11 – NSM IV (Elective)	3			Social Science 199	3		
Social Science 197	3			Anthropology 119	3		
Anthropology 113	3			Anthropology 132	3		
Anthropology 199	3			Anthropology 173	3		
Philosophy 112	3			Philosophy 113	3		
Total	15			Total	15		

FOURTH YEAR							
First Semester	Units	Sem & AY Taken	Grade	Second Semester	Units	Sem & AY Taken	Grade
GE 12 – SSP IV (Elective)	3			Social Science 180	3		
PI 100	3			Social Science 198	3		
Anthropology Elective	3			Anthropology 179	3		
Anthropology 200	3			Philosophy 150	3		
Philosophy 171	3			Philosophy Elective	3		
Philosophy 130	3						
Total	18			Total	15		

* PE 2 courses should be taken in different events.

TOTAL NUMBER OF UNITS: 124 UNITS

GE Courses

Domain	Course Title	Units
Arts and Humanities (AH)		
		12
<ul style="list-style-type: none"> ▪ AH I ▪ AH II ▪ AH III ▪ AH IV 	Wika 1 Comm 10 Arts I Elective Course	3 3 3 3
Natural Sciences and Mathematics (NSM)		
		12
<ul style="list-style-type: none"> ▪ NSM I ▪ NSM II ▪ NSM III ▪ NSM IV 	Science 10 Science 11 STS 1 Elective Course	3 3 3 3
Social Sciences and Philosophy (SSP)		
		12
<ul style="list-style-type: none"> ▪ SSP I ▪ SSP II ▪ SSP III ▪ SSP IV 	Kas 1/Hist I SAS 1 Ethics 1 Elective Course	3 3 3 3

Core Courses

Course	Course Title	19 units	Pre-requisite
Social Science 100	Historical Context of the Social Sciences	3	
Social Science 101	Fundamental Statistics for the Social Sciences	4	
Social Science 180	Epistemological Issues in the Social Sciences	3	SS
Social Science 197	Ontology of the Social	3	JS
Social Science 198	Special Topics	3	SS (may be repeated once)
Social Science 199	Seminar on Social Science Methodology	3	Soc Sci 101/Psych 110

Other Required Courses

Course	Course Title	6 Units	Pre-requisite
PI 100	The Life & Works of Rizal	3	JS
Comm 11/ Kom 11	Advanced College Writing/ SulatingPangkolehiyo: Pagsusuri at Pagsulat	3	

Major Concentration: Anthropology

Required Courses	Course Title	33 units	Pre-requisite
Anthropology 100	General Anthropology	3	
Anthropology 104	Human Evolution	3	Anthro 100
Anthropology 113	Introduction to Philippine Archaeology	3	
Anthropology 119	Introduction to Museology	3	
Anthropology 132	Introduction to Ecological Anthropology	3	Anthro 100
Anthropology 170	Language and Culture	3	
Anthropology 173	Introduction to Urban Anthropology	3	
Anthropology 179	Culture Change and Applied Anthropology	3	SS
Anthropology 192	Introduction to Anthropological Theory	3	Anthro 100
Anthropology 199	Field Methods	3	Anthro 192
Anthropology 200	Bachelor's Thesis	3	Soc Sci 199
Electives	Any of the following	3 units	
Anthropology 133	Economic Anthropology	3	
Anthropology 141	Introduction to Political Anthropology	3	
Anthropology 151	Comparative Religion	3	
Anthropology 161	Introduction to Folklore	3	
Anthropology 181	Social Anthropology	3	
Anthropology 182	Culture and Personality	3	
Anthropology 198	Special Topics	3	

Minor Discipline: Philosophy

Required Courses	Course Title	24 units	Pre-requisite
Philosophy 11	Logic	3	
Philosophy 110	Ancient Philosophy	3	
Philosophy 111	Medieval Philosophy	3	
Philosophy 112	Modern Philosophy	3	
Philosophy 113	Contemporary Philosophy	3	
Philosophy 130	Metaphysics	3	
Philosophy 150	Epistemology	3	
Philosophy 171	Ethics	3	
Electives	Any of the following	3 units	
Philosophy 125	Indian Philosophy	3	
Philosophy 126	Chinese Philosophy	3	
Philosophy 170	Philosophy of Man	3	
Philosophy 177	Issues in Filipino Philosophy	3	
Philosophy 194	Directed Readings in Philosophy	3	JS/COI
Philosophy 198	Special Problems	3	SS (may be taken twice)

PE and NSTP Courses

Required Courses	Course Title		Pre-requisite
PE 1	Foundations of Physical Fitness	(2)	
PE 2 (3 events)	Physical Education Activities (Beginners)	(2) each	
NSTP 1	National Service Training Program	(3)	
NSTP 2	National Service Training Program	(3)	

Major Concentration: Anthropology
Minor Discipline: Political Science

FIRST YEAR							
First Semester	Units	Sem & AY Taken	Grade	Second Semester	Units	Sem & AY Taken	Grade
GE 1 – SSP I (Kas 1/Hist I)	3			GE 5 – AH II (Comm 10)	3		
GE 2 – AH I (Wika 1)	3			GE 6 – SSP III (Ethics 1)	3		
GE 3 – NSM I (Science 10)	3			GE 7 – NSM II (Science 11)	3		
GE 4 – SSP II (SAS 1)	3			Anthropology 104	3		
Anthropology 100	3			Political Science 100	3		
PE 1	(2)			P.E. 2*	(2)		
Total	15			Total	15		

SECOND YEAR							
First Semester	Units	Sem & AY Taken	Grade	Second Semester	Units	Sem & AY Taken	Grade
GE 8 – AH III (Arts I)	3			GE 10 – AH IV (Elective)	3		
GE 9 – NSM III (STS 1)	3			Social Science 100	3		
Comm 11/ Komm11	3			Social Science 101	4		
Anthropology 170	3			Anthropology 192	3		
Political Science 160	3			Political Science 150	3		
P.E. 2*	(2)			Political Science Elective 1	3		
NSTP 1	(3)			P.E. 2*	(2)		
				NSTP 2	(3)		
Total	15			Total	19		

THIRD YEAR							
First Semester	Units	Sem & AY Taken	Grade	Second Semester	Units	Sem & AY Taken	Grade
GE 11 – NSM IV (Elective)	3			Social Science 199	3		
Social Science 197	3			Anthropology 119	3		
Anthropology 113	3			Anthropology 132	3		
Anthropology 199	3			Anthropology 173	3		
Political Science 178	3			Political Science 182	3		
Political Science Elective 2	3						
Total	18			Total	15		

FOURTH YEAR							
First Semester	Units	Sem & AY Taken	Grade	Second Semester	Units	Sem & AY Taken	Grade
GE 12 – SSP IV (Elective)	3			Social Science 180	3		
PI 100	3			Social Science 198	3		
Anthropology Elective	3			Anthropology 179	3		
Anthropology 200	3						
Political Science 192	3						
Total	15			Total	9		

* PE 2 courses should be taken in different events.

TOTAL NUMBER OF UNITS: 121 UNITS

GE Courses

Domain	Course Title	Units
Arts and Humanities (AH)		
		12
<ul style="list-style-type: none"> ▪ AH I ▪ AH II ▪ AH III ▪ AH IV 	Wika 1 Comm 10 Arts I Elective Course	3 3 3 3
Natural Sciences and Mathematics (NSM)		
		12
<ul style="list-style-type: none"> ▪ NSM I ▪ NSM II ▪ NSM III ▪ NSM IV 	Science 10 Science 11 STS 1 Elective Course	3 3 3 3
Social Sciences and Philosophy (SSP)		
		12
<ul style="list-style-type: none"> ▪ SSP I ▪ SSP II ▪ SSP III ▪ SSP IV 	Kas 1/Hist I SAS 1 Ethics 1 Elective Course	3 3 3 3

Core Courses

Course	Course Title	19 units	Pre-requisite
Social Science 100	Historical Context of the Social Sciences	3	
Social Science 101	Fundamental Statistics for the Social Sciences	4	
Social Science 180	Epistemological Issues in the Social Sciences	3	SS
Social Science 197	Ontology of the Social	3	JS
Social Science 198	Special Topics	3	SS (may be repeated once)
Social Science 199	Seminar on Social Science Methodology	3	Soc Sci 101/Psych 110

Other Required Courses

Course	Course Title	6 Units	Pre-requisite
PI 100	The Life & Works of Rizal	3	JS
Comm 11/ Kom 11	Advanced College Writing/ SulatingPangkolehiyo: Pagsusuri at Pagsulat	3	

Major Concentration: Anthropology

Required Courses	Course Title	33 units	Pre-requisite
Anthropology 100	General Anthropology	3	
Anthropology 104	Human Evolution	3	Anthro 100
Anthropology 113	Introduction to Philippine Archaeology	3	
Anthropology 119	Introduction to Museology	3	
Anthropology 132	Introduction to Ecological Anthropology	3	Anthro 100
Anthropology 170	Language and Culture	3	
Anthropology 173	Introduction to Urban Anthropology	3	
Anthropology 179	Culture Change and Applied Anthropology	3	SS
Anthropology 192	Introduction to Anthropological Theory	3	Anthro 100
Anthropology 199	Field Methods	3	Anthro 192
Anthropology 200	Bachelor's Thesis	3	Soc Sci 199
Electives	Any of the following	3 units	
Anthropology 133	Economic Anthropology	3	
Anthropology 141	Introduction to Political Anthropology	3	
Anthropology 151	Comparative Religion	3	
Anthropology 161	Introduction to Folklore	3	
Anthropology 181	Social Anthropology	3	
Anthropology 182	Culture and Personality	3	
Anthropology 198	Special Topics	3	

Minor Discipline: Political Science

Required Courses	Course Title	18 Units	Pre-requisite
Political Science 100	Approaches to Understanding Political Phenomena	3	
Political Science 150	Philippine National and Local Administration	3	Pol Sci 100
Political Science 160	Society, Politics and Government	3	Pol Sci 100
Political Science 178	Government and Politics in Southeast Asia	3	Pol Sci 100
Political Science 182	International Politics	3	Pol Sci 100
Political Science 192	Ancient & Medieval Political Theory	3	SS
Electives	Any two of the following	6 units	
Political Science 151	The Philippine Executive	3	Pol Sci 100
Political Science 152	Philippine Legislative System	3	Pol Sci 100
Political Science 153	The Philippine Judicial System	3	Pol Sci 100
Political Science 161	Political Parties and Interest Groups	3	Pol Sci 100
Political Science 163	Political Behavior: Processes and Movements	3	Pol Sci 160/COI
Political Science 171	American Government and Politics	3	Pol Sci 100
Political Science 172	Government and Politics of Selected European States	3	Pol Sci 100
Political Science 177	Government and Politics of East Asia	3	Pol Sci 100
Political Science 179	Government and Politics of South Asia	3	Pol Sci 100
Political Science 183	International Organization	3	Pol Sci 182
Political Science 185	Public International Law	3	Pol Sci 182
Political Science 186	Private International Law	3	Pol Sci 182
Political Science 190	Practicum	3	JS
Political Science 193	Modern Political Theory	3	SS
Political Science 194	American Political Theory	3	Pol Sci 171/COI
Political Science 197	Directed Study in Political Science	3	SS
Political Science 198	Special Topics	3	SS (may be repeated once)

PE and NSTP Courses

Required Courses	Course Title		Pre-requisite
PE 1	Foundations of Physical Fitness	(2)	
PE 2 (3 events)	Physical Education Activities (Beginners)	(2) each	
NSTP 1	National Service Training Program	(3)	
NSTP 2	National Service Training Program	(3)	

Major Concentration: Anthropology
Minor Discipline: Psychology

FIRST YEAR

First Semester	Units	Sem & AY Taken	Grade	Second Semester	Units	Sem & AY Taken	Grade
GE 1 – SSP I (Kas 1/Hist I)	3			GE 5 – AH II (Comm 10)	3		
GE 2 – AH I (Wika 1)	3			GE 6 – SSP III (Ethics 1)	3		
GE 3 – NSM I (Science 10)	3			GE 7 – NSM II (Science 11)	3		
GE 4 – SSP II (SAS 1)	3			GE 8 – AH III (Arts I)	3		
Anthropology 100	3			Anthropology 104	3		
PE 1	(2)			P.E. 2*	(2)		
Total	15			Total	15		

SECOND YEAR

First Semester	Units	Sem & AY Taken	Grade	Second Semester	Units	Sem & AY Taken	Grade
GE 9 – NSM III (STS 1)	3			GE 11 – AH IV (Elective)	3		
GE 10 – SSP IV (Elective)	3			Social Science 100	3		
Comm 11/ Komm11	3			Social Science 101	4		
Anthropology 170	3			Anthropology 192	3		
Psychology 101	3			Psychology 150	3		
P.E. 2*	(2)			P.E. 2*	(2)		
NSTP 1	(3)			NSTP 2	(3)		
Total	15			Total	16		

THIRD YEAR

First Semester	Units	Sem & AY Taken	Grade	Second Semester	Units	Sem & AY Taken	Grade
GE 12 – NSM IV (Elective)	3			Social Science 199	3		
Social Science 197	3			Anthropology 119	3		
Anthropology 113	3			Anthropology 132	3		
Anthropology 199	3			Anthropology 173	3		
Psychology 140	3			Psychology 180	3		
Total	15			Total	15		

FOURTH YEAR

First Semester	Units	Sem & AY Taken	Grade	Second Semester	Units	Sem & AY Taken	Grade
PI 100	3			Social Science 180	3		
Anthropology Elective	3			Social Science 198	3		
Anthropology 200	3			Anthropology 179	3		
Psychology 155	3			Psychology Elective 2	3		
Psychology Elective 1	3			Psychology Elective 3	3		
Total	15			Total	15		

* PE 2 courses should be taken in different events

TOTAL NUMBER OF UNITS: 121 UNITS

GE Courses

Domain	Course Title	Units
Arts and Humanities (AH)		
		12
<ul style="list-style-type: none"> ▪ AH I ▪ AH II ▪ AH III ▪ AH IV 	Wika 1 Comm 10 Arts I Elective Course	3 3 3 3
Natural Sciences and Mathematics (NSM)		
		12
<ul style="list-style-type: none"> ▪ NSM I ▪ NSM II ▪ NSM III ▪ NSM IV 	Science 10 Science 11 STS 1 Elective Course	3 3 3 3
Social Sciences and Philosophy (SSP)		
		12
<ul style="list-style-type: none"> ▪ SSP I ▪ SSP II ▪ SSP III ▪ SSP IV 	Kas 1/Hist I SAS 1 Ethics 1 Elective Course	3 3 3 3

Core Courses

Course	Course Title	19 units	Pre-requisite
Social Science 100	Historical Context of the Social Sciences	3	
Social Science 101	Fundamental Statistics for the Social Sciences	4	
Social Science 180	Epistemological Issues in the Social Sciences	3	SS
Social Science 197	Ontology of the Social	3	JS
Social Science 198	Special Topics	3	SS (may be repeated once)
Social Science 199	Seminar on Social Science Methodology	3	Soc Sci 101/Psych 110

Other Required Courses

Course	Course Title	6 Units	Pre-requisite
PI 100	The Life & Works of Rizal	3	JS
Comm 11/ Kom 11	Advanced College Writing/ SulatingPangkolehiyo: Pagsusuri at Pagsulat	3	

Major Concentration: Anthropology

Required Courses	Course Title	33 units	Pre-requisite
Anthropology 100	General Anthropology	3	
Anthropology 104	Human Evolution	3	Anthro 100
Anthropology 113	Introduction to Philippine Archaeology	3	
Anthropology 119	Introduction to Museology	3	
Anthropology 132	Introduction to Ecological Anthropology	3	Anthro 100
Anthropology 170	Language and Culture	3	
Anthropology 173	Introduction to Urban Anthropology	3	
Anthropology 179	Culture Change and Applied Anthropology	3	SS
Anthropology 192	Introduction to Anthropological Theory	3	Anthro 100
Anthropology 199	Field Methods	3	Anthro 192
Anthropology 200	Bachelor's Thesis	3	Soc Sci 199
Electives	Any of the following	3 units	
Anthropology 133	Economic Anthropology	3	
Anthropology 141	Introduction to Political Anthropology	3	
Anthropology 151	Comparative Religion	3	
Anthropology 161	Introduction to Folklore	3	
Anthropology 181	Social Anthropology	3	
Anthropology 182	Culture and Personality	3	
Anthropology 198	Special Topics	3	

Minor Discipline: Psychology

Required Courses	Course Title	15 units	Pre-requisite
Psychology 101	General Psychology	3	
Psychology 140	Behavior Analysis	3	Psych 11/101/written COI
Psychology 150	Personality	3	Psych 11/101/written COI
Psychology 155	Abnormal Behavior	3	Psych 140,150/COI
Psychology 180	Social Psychology	3	Psych 150/COI
Electives	Any combination of the following to total 9 units	9 units	
Psychology 115	Experimental Psychology	5	Soc Sci 101
Psychology 135	Perception	3	Psych 11/101, 115/written COI
Psychology 145	Psychology of Language	3	Psych 140/COI
Psychology 160	Physiological Psychology	4	SS
Psychology 162	Psychological Measurement	4	Stat course, Psych 115, 150/COI
Psychology 163	Psychological Interview	3	Psych 150/COI
Psychology 171	Child Psychology	3	Psych 150/COI
Psychology 172	Adolescent Psychology	3	Psych 150
Psychology 181	Special Topics in Group Dynamics	3	
Psychology 182	Filipino Psychology	3	Psych 150, 180
Psychology 195	Special Topics in Psychology	3	SS (may be taken twice provided the topics are not identical)

Or any upper division course in the Social Sciences recommended by the discipline.

PE and NSTP Courses

Required Courses	Course Title		Pre-requisite
PE 1	Foundations of Physical Fitness	(2)	
PE 2 (3 events)	Physical Education Activities (Beginners)	(2) each	
NSTP 1	National Service Training Program	(3)	
NSTP 2	National Service Training Program	(3)	

Major Concentration: Anthropology
Minor Discipline: Sociology

FIRST YEAR

First Semester	Units	Sem & AY Taken	Grade	Second Semester	Units	Sem & AY Taken	Grade
GE 1 – SSP I (Kas 1/Hist I)	3			GE 5 – AH II (Comm 10)	3		
GE 2 – AH I (Wika 1)	3			GE 6 – SSP III (Ethics 1)	3		
GE 3 – NSM I (Science 10)	3			GE 7 – NSM II (Science 11)	3		
GE 4 – SSP II (SAS 1)	3			GE 8 – AH III (Arts I)	3		
Anthropology 100	3			Anthropology 104	3		
PE 1	(2)			PE 2*	(2)		
Total	15			Total	15		

SECOND YEAR

First Semester	Units	Sem & AY Taken	Grade	Second Semester	Units	Sem & AY Taken	Grade
GE 9 – NSM III (STS 1)	3			Social Science 100	3		
GE 10 – AH IV (Elective)	3			Social Science 101	4		
Comm 11/ Komm11	3			Anthropology 192	3		
Anthropology 170	3			Sociology 114	3		
Sociology 101	3			Sociology 142	3		
PE 2*	(2)			PE 2*	(2)		
NSTP 1	(3)			NSTP 2	(3)		
Total	15			Total	16		

THIRD YEAR

First Semester	Units	Sem & AY Taken	Grade	Second Semester	Units	Sem & AY Taken	Grade
GE 11 – NSM IV (Elective)	3			Social Science 199	3		
Social Science 197	3			Anthropology 119	3		
Anthropology 113	3			Anthropology 132	3		
Anthropology 199	3			Anthropology 173	3		
Sociology 195	3			Sociology 132	3		
Total	15			Total	15		

FOURTH YEAR

First Semester	Units	Sem & AY Taken	Grade	Second Semester	Units	Sem & AY Taken	Grade
GE 12 – SSP IV (Elective)	3			PI 100	3		
Anthropology Elective	3			Social Science 180	3		
Anthropology 200	3			Social Science 198	3		
Sociology 160	3			Anthropology 179	3		
Sociology Elective	3			Sociology 153	3		
Total	15			Total	15		

* PE 2 courses should be taken in different events.

TOTAL NUMBER OF UNITS: 121 UNITS

GE Courses

Domain	Course Title	Units
Arts and Humanities (AH)		
12		
<ul style="list-style-type: none"> ▪ AH I ▪ AH II ▪ AH III ▪ AH IV 	Wika 1 Comm 10 Arts I Elective Course	3 3 3 3
Natural Sciences and Mathematics (NSM)		
12		
<ul style="list-style-type: none"> ▪ NSM I ▪ NSM II ▪ NSM III ▪ NSM IV 	Science 10 Science 11 STS 1 Elective Course	3 3 3 3
Social Sciences and Philosophy (SSP)		
12		
<ul style="list-style-type: none"> ▪ SSP I ▪ SSP II ▪ SSP III ▪ SSP IV 	Kas 1/Hist I SAS 1 Ethics 1 Elective Course	3 3 3 3

Core Courses

Course	Course Title	19 units	Pre-requisite
Social Science 100	Historical Context of the Social Sciences	3	
Social Science 101	Fundamental Statistics for the Social Sciences	4	
Social Science 180	Epistemological Issues in the Social Sciences	3	SS
Social Science 197	Ontology of the Social	3	JS
Social Science 198	Special Topics	3	SS (may be repeated once)
Social Science 199	Seminar on Social Science Methodology	3	Soc Sci 101/Psych 110

Other Required Courses

Course	Course Title	6 Units	Pre-requisite
PI 100	The Life & Works of Rizal	3	JS
Comm 11/ Kom 11	Advanced College Writing/ SulatingPangkolehiyo: Pagsusuri at Pagsulat	3	

Major Concentration: Anthropology

Required Courses	Course Title	33 units	Pre-requisite
Anthropology 100	General Anthropology	3	
Anthropology 104	Human Evolution	3	Anthro 100
Anthropology 113	Introduction to Philippine Archaeology	3	
Anthropology 119	Introduction to Museology	3	
Anthropology 132	Introduction to Ecological Anthropology	3	Anthro 100
Anthropology 170	Language and Culture	3	
Anthropology 173	Introduction to Urban Anthropology	3	
Anthropology 179	Culture Change and Applied Anthropology	3	SS
Anthropology 192	Introduction to Anthropological Theory	3	Anthro 100
Anthropology 199	Field Methods	3	Anthro 192
Anthropology 200	Bachelor's Thesis	3	Soc Sci 199
Electives	Any of the following	3 units	
Anthropology 133	Economic Anthropology	3	
Anthropology 141	Introduction to Political Anthropology	3	
Anthropology 151	Comparative Religion	3	
Anthropology 161	Introduction to Folklore	3	
Anthropology 181	Social Anthropology	3	
Anthropology 182	Culture and Personality	3	
Anthropology 198	Special Topics	3	

Minor Discipline: Sociology

Required Courses	Course Title	21 units	Pre-requisite
Sociology 101	General Sociology	3	
Sociology 114	The Philippine Social System	3	Socio 101/equi
Sociology 132	Sociology of Deviant Behavior	3	Socio 101/equi
Sociology 142	Sociology of Mass Communication	3	Socio 101/equi
Sociology 153	Sociology of Development	3	Socio 101/equi, Socio 195
Sociology 160	Society & Population	3	Socio 101/equi
Sociology 195	Sociological Theories	3	Socio 101/equi
Electives	Any of the following	3 units	
Sociology 102	Social Organization	3	Socio 101/equi
Sociology 109	Comparative Social Structure	3	Socio 101/equi
Sociology 119	Industrial Sociology	3	Socio 101/equi
Sociology 125	Sociology of Religion	3	Socio 101/equi
Sociology 126	Urban Sociology	3	Socio 101/equi
Sociology 198	Special Topics in Sociology	3	Socio 101/equi
Sociology 199	Methods of Sociological Research	3	Socio 195, SS 101

PE and NSTP Courses

Required Courses	Course Title		Pre-requisite
PE 1	Foundations of Physical Fitness	(2)	
PE 2 (3 events)	Physical Education Activities (Beginners)	(2) each	
NSTP 1	National Service Training Program	(3)	
NSTP 2	National Service Training Program	(3)	

Major Concentration: Economics
Minor Discipline: Philosophy

FIRST YEAR

First Semester	Units	Sem & AY Taken	Grade	Second Semester	Units	Sem & AY Taken	Grade
GE 1 - AH I (Wika 1)	3			GE 4 - AH II (Comm 10)	3		
GE 2 - SSP I (Kas 1/Hist I)	3			GE 5 - NSM I (Science 10)	3		
GE 3 - SSP II (SAS 1)	3			GE 6 - NSM II (Science 11)	3		
Math 100	4			GE 7 - SSP III (Ethics 1)	3		
Economics 101	4			Economics 102	4		
P.E. 1	(2)			P.E. 2*	(2)		
Total	17			Total	16		

SECOND YEAR

First Semester	Units	Sem & AY Taken	Grade	Second Semester	Units	Sem & AY Taken	Grade
GE 8 - AH III (Arts I)	3			GE 10 - NSM III (STS 1)	3		
GE 9 - SSP IV (Elective)	3			Social Science 100	3		
Economics 106	3			Social Science 101	4		
Economics 121	3			Economics 151	3		
Philosophy 11	3			Philosophy 111	3		
Philosophy 110	3			P.E. 2*	(2)		
P.E. 2*	(2)			NSTP 2	(3)		
NSTP 1	(3)						
Total	18			Total	16		

THIRD YEAR

First Semester	Units	Sem & AY Taken	Grade	Second Semester	Units	Sem & AY Taken	Grade
GE 11 - NSM IV (Elective)	3			GE 12 - AH IV (Elective)	3		
Comm 11 / Kom11	3			Social Science 199	3		
Social Science 197	3			Economics 141	3		
Economics 131	4			Economics 191	3		
Economics Elective 1	3			Economics Elective 2	3		
Philosophy 112	3			Philosophy 113	3		
Total	19			Total	18		

FOURTH YEAR

First Semester	Units	Sem & AY Taken	Grade	Second Semester	Units	Sem & AY Taken	Grade
Social Science 180	3			PI 100	3		
Social Science 198	3			Philosophy 150	3		
Economics 200	3			Philosophy Elective	3		
Philosophy 171	3						
Philosophy 130	3						
Total	15			Total	9		

* PE 2 should be taken in different events

TOTAL NUMBER OF UNITS: 128 UNITS

GE Courses

Domain	Course Title	Units
Arts and Humanities (AH) 12		
▪ AH I	Wika 1	3
▪ AH II	Comm 10	3
▪ AH III	Arts I	3
▪ AH IV	Elective Course	3
Natural Sciences and Mathematics (NSM) 12		
▪ NSM I	Science 10	3
▪ NSM II	Science 11	3
▪ NSM III	STS 1	3
▪ NSM IV	Elective Course	3
Social Sciences and Philosophy (SSP) 12		
▪ SSP I	Kas 1/Hist I	3
▪ SSP II	SAS 1	3
▪ SSP III	Ethics 1	3
▪ SSP IV	Elective Course	3

Core Courses

Course	Course Title	19 units	Pre-requisite
Social Science 100	Historical Context of the Social Sciences	3	
Social Science 101	Fundamental Statistics for the Social Sciences	4	
Social Science 180	Epistemological Issues in the Social Sciences	3	SS
Social Science 197	Ontology of the Social	3	JS
Social Science 198	Special Topics	3	SS (may be repeated once)
Social Science 199	Seminar on Social Science Methodology	3	Soc Sci 101/Psych 110

Other Required Courses

Course	Course Title	10 Units	Pre-requisite
PI 100	The Life & Works of Rizal	3	JS
Comm 11/ Kom 11	Advanced College Writing/ SulatingPangkolehiyo: Pagsusuri at Pagsulat	3	
Math 100	Introduction to Calculus	4	Math 17/COI

Major Concentration: Economics

Required Courses	Course Title	30 units	Pre-requisite
Economics 101	Macroeconomics	4	
Economics 102	Microeconomics	4	
Economics 106	Elements of Mathematical Economics	3	Econ 101, 102; Math 100
Economics 121	Monetary Economics	3	Econ 101, 102
Economics 131	Introduction to Quantitative Economics	4	Econ 101, 102; Math 100; Soc Sci 101
Economics 141	International Economics	3	Econ 101, 102
Economics 151	Public Economics	3	Econ 101, 102
Economics 191	Development Economics	3	Econ 101, 102
Economics 200	Bachelor's Thesis	3	SS, Soc Sci 199
Electives		6 units	
Any two of the following:			
Economics 109	History of Economic Thought	3	Econ 101, 102
Economics 110	Methods of Economic History	3	Econ 101, 102
Economics 116	The Economies of Asia	3	Econ 101, 102
Economics 142	International Trade Policies	3	Econ 141/COI
Economics 152	Taxation and Fiscal Policy	3	Econ 151/COI
Economics 161	Industrial Organization	3	Econ 101, 102
Economics 171	Economics of Agriculture	3	Econ 101, 102
Economics 181	Labor Economics	3	Econ 101, 102
Economics 189	Comparative Economic Systems	3	Econ 101, 102
Economics 194	Economic Anthropology	3	Econ 101, 102
Economics 195	Reading Course in Economics	3	Econ 101, 102 (may be taken twice)
Economics 198	Special Topics in Economics	3	Econ 101, 102 (may be taken twice provided the topics are not identical)

Minor Discipline: Philosophy

Required Courses	Course Title	24 units	Pre-requisite
Philosophy 11	Logic	3	
Philosophy 110	Ancient Philosophy	3	
Philosophy 111	Medieval Philosophy	3	
Philosophy 112	Modern Philosophy	3	
Philosophy 113	Contemporary Philosophy	3	
Philosophy 130	Metaphysics	3	
Philosophy 150	Epistemology	3	
Philosophy 171	Ethics	3	
Electives		3 units	
Any of the following			
Philosophy 125	Indian Philosophy	3	
Philosophy 126	Chinese Philosophy	3	
Philosophy 170	Philosophy of Man	3	
Philosophy 177	Issues in Filipino Philosophy	3	
Philosophy 194	Directed Readings in Philosophy	3	JS/COI
Philosophy 198	Special Problems	3	SS (may be taken twice)

PE and NSTP Courses

Required Courses	Course Title		Pre-requisite
PE 1	Foundations of Physical Fitness	(2)	
PE 2 (3 events)	Physical Education Activities (Beginners)	(2) each	
NSTP 1	National Service Training Program	(3)	
NSTP 2	National Service Training Program	(3)	

Major Concentration: Economics
Minor Discipline: Political Science

FIRST YEAR

First Semester	Units	Sem & AY Taken	Grade	Second Semester	Units	Sem & AY Taken	Grade
GE 1 - AH I (Wika 1)	3			GE 4 - AH II (Comm 1)	3		
GE 2 - SSP I (Kas 1/Hist I)	3			GE 5 - NSM I (Science 10)	3		
GE 3 - SSP II (SAS 1)	3			GE 6 - NSM II (Science 11)	3		
Math 100	4			GE 7 - SSP III (Ethics 1)	3		
Economics 101	4			Economics 102	4		
P.E. 1	(2)			Political Science 100	3		
				P.E. 2*	(2)		
Total	17			Total	19		

SECOND YEAR

First Semester	Units	Sem & AY Taken	Grade	Second Semester	Units	Sem & AY Taken	Grade
GE 8 - AH III (Arts I)	3			GE 10 - NSM III (STS 1)	3		
GE 9 - SSP IV (Elective)	3			Social Science 100	3		
Comm 11 / Kom11	3			Social Science 101	4		
Economics 106	3			Economics 151	3		
Economics 121	3			Political Science 150	3		
Political Science 160	3			Political Science Elective 1	3		
P.E. 2*	(2)			P.E. 2*	(2)		
NSTP 1	(3)			NSTP 2	(3)		
Total	18			Total	19		

THIRD YEAR

First Semester	Units	Sem & AY Taken	Grade	Second Semester	Units	Sem & AY Taken	Grade
GE 11 - NSM IV (Elective)	3			GE 12 - AH IV (Elective)	3		
Social Science 197	3			Social Science 199	3		
Economics 131	4			Economics 141	3		
Economics Elective 1	3			Economics 191	3		
Political Science 178	3			Economics Elective 2	3		
Political Science Elective 2	3			Political Science 182	3		
Total	19			Total	18		

FOURTH YEAR

First Semester	Units	Sem & AY Taken	Grade	Second Semester	Units	Sem & AY Taken	Grade
PI 100	3						
Social Science 180	3						
Social Science 198	3						
Economics 200	3						
Political Science 192	3						
Total	15						

* PE 2 courses should be taken in different events

TOTAL NUMBER OF UNITS: 125 UNITS

GE Courses

Domain	Course Title	Units
Arts and Humanities (AH)		12
<ul style="list-style-type: none"> ▪ AH I ▪ AH II ▪ AH III ▪ AH IV 	Wika 1 Comm 10 Arts I Elective Course	3 3 3 3
Natural Sciences and Mathematics (NSM)		12
<ul style="list-style-type: none"> ▪ NSM I ▪ NSM II ▪ NSM III ▪ NSM IV 	Science 10 Science 11 STS 1 Elective Course	3 3 3 3
Social Sciences and Philosophy (SSP)		12
<ul style="list-style-type: none"> ▪ SSP I ▪ SSP II ▪ SSP III ▪ SSP IV 	Kas 1/Hist I SAS 1 Ethics 1 Elective Course	3 3 3 3

Core Courses

Course	Course Title	19 units	Pre-requisite
Social Science 100	Historical Context of the Social Sciences	3	
Social Science 101	Fundamental Statistics for the Social Sciences	4	
Social Science 180	Epistemological Issues in the Social Sciences	3	SS
Social Science 197	Ontology of the Social	3	JS
Social Science 198	Special Topics	3	SS (may be repeated once)
Social Science 199	Seminar on Social Science Methodology	3	Soc Sci 101/Psych 110

Other Required Courses

Course	Course Title	10 Units	Pre-requisite
PI 100	The Life & Works of Rizal	3	JS
Comm 11/ Kom 11	Advanced College Writing/ SulatingPangkolehiyo: Pagsusuri at Pagsulat	3	
Math 100	Introduction to Calculus	4	Math 17/COI

Major Concentration: Economics

Required Courses	Course Title	30 units	Pre-requisite
Economics 101	Macroeconomics	4	
Economics 102	Microeconomics	4	
Economics 106	Elements of Mathematical Economics	3	Econ 101, 102; Math 100
Economics 121	Monetary Economics	3	Econ 101, 102
Economics 131	Introduction to Quantitative Economics	4	Econ 101, 102; Math 100; Soc Sci 101
Economics 141	International Economics	3	Econ 101, 102
Economics 151	Public Economics	3	Econ 101, 102
Economics 191	Development Economics	3	Econ 101, 102
Economics 200	Bachelor's Thesis	3	SS, Soc Sci 199
Electives	Any two of the following:	6 units	
Economics 109	History of Economic Thought	3	Econ 101, 102
Economics 110	Methods of Economic History	3	Econ 101, 102
Economics 116	The Economies of Asia	3	Econ 101, 102
Economics 142	International Trade Policies	3	Econ 141/COI
Economics 152	Taxation and Fiscal Policy	3	Econ 151/COI
Economics 161	Industrial Organization	3	Econ 101, 102
Economics 171	Economics of Agriculture	3	Econ 101, 102
Economics 181	Labor Economics	3	Econ 101, 102
Economics 189	Comparative Economic Systems	3	Econ 101, 102
Economics 194	Economic Anthropology	3	Econ 101, 102
Economics 195	Reading Course in Economics	3	Econ 101, 102 (may be taken twice)
Economics 198	Special Topics in Economics	3	Econ 101, 102 (may be taken twice provided the topics are not identical)

Minor Discipline: Political Science

Required Courses	Course Title	18 Units	Pre-requisite
Political Science 100	Approaches to Understanding Political Phenomena	3	
Political Science 150	Philippine National and Local Administration	3	Pol Sci 100
Political Science 160	Society, Politics and Government	3	Pol Sci 100
Political Science 178	Government and Politics in Southeast Asia	3	Pol Sci 100
Political Science 182	International Politics	3	Pol Sci 100
Political Science 192	Ancient & Medieval Political Theory	3	SS
Electives	Any two of the following	6 units	
Political Science 151	The Philippine Executive	3	Pol Sci 100
Political Science 152	Philippine Legislative System	3	Pol Sci 100
Political Science 153	The Philippine Judicial System	3	Pol Sci 100
Political Science 161	Political Parties and Interest Groups	3	Pol Sci 100
Political Science 163	Political Behavior: Processes and Movements	3	Pol Sci 160/COI
Political Science 171	American Government and Politics	3	Pol Sci 100
Political Science 172	Government and Politics of Selected European States	3	Pol Sci 100
Political Science 177	Government and Politics of East Asia	3	Pol Sci 100
Political Science 179	Government and Politics of South Asia	3	Pol Sci 100
Political Science 183	International Organization	3	Pol Sci 182
Political Science 185	Public International Law	3	Pol Sci 182
Political Science 186	Private International Law	3	Pol Sci 182
Political Science 190	Practicum	3	JS
Political Science 193	Modern Political Theory	3	SS
Political Science 194	American Political Theory	3	Pol Sci 171/COI
Political Science 197	Directed Study in Political Science	3	SS
Political Science 198	Special Topics	3	SS (may be repeated once)

PE and NSTP Courses

Required Courses	Course Title		Pre-requisite
PE 1	Foundations of Physical Fitness	(2)	
PE 2 (3 events)	Physical Education Activities (Beginners)	(2) each	
NSTP 1	National Service Training Program	(3)	
NSTP 2	National Service Training Program	(3)	

Major Concentration: Economics
Minor Discipline: Psychology

FIRST YEAR

First Semester	Units	Sem & AY Taken	Grade	Second Semester	Units	Sem & AY Taken	Grade
GE 1 - AH I (Wika 1)	3			GE 4 - AH II (Comm 10)	3		
GE 2 - SSP I (Kas 1/Hist I)	3			GE 5 - NSM I (Science 10)	3		
GE 3 - SSP II (SAS 1)	3			GE 6 - NSM II (Science 11)	3		
Math 100	4			GE 7 - SSP III (Ethics 1)	3		
Economics 101	4			Economics 102	4		
P.E. 1	(2)			P.E. 2*	(2)		
Total	17			Total	16		

SECOND YEAR

First Semester	Units	Sem & AY Taken	Grade	Second Semester	Units	Sem & AY Taken	Grade
GE 8 - AH III (Arts I)	3			GE 10 - NSM III (STS 1)	3		
GE 9 - SP IV (Elective)	3			Social Science 100	3		
Comm 11 / Kom11	3			Social Science 101	4		
Economics 106	3			Economics 151	3		
Economics 121	3			Psychology 150	3		
Psychology 101	3			P.E. 2*	(2)		
P.E. 2*	(2)			NSTP 2	(3)		
NSTP 1	(3)						
Total	18			Total	16		

THIRD YEAR

First Semester	Units	Sem & AY Taken	Grade	Second Semester	Units	Sem & AY Taken	Grade
GE 11 - NSM IV (Elective)	3			GE 12 - AH IV (Elective)	3		
Social Science 197	3			Social Science 199	3		
Economics 131	4			Economics 141	3		
Economics Elective 1	3			Economics 191	3		
Psychology 140	3			Economics Elective 2	3		
				Psychology 180	3		
Total	16			Total	18		

FOURTH YEAR

First Semester	Units	Sem & AY Taken	Grade	Second Semester	Units	Sem & AY Taken	Grade
Social Science 180	3			PI 100	3		
Social Science 198	3			Psychology Elective 2	3		
Economics 200	3			Psychology Elective 3	3		
Psychology 155	3						
Psychology Elective 1	3						
Total	15			Total	9		

* PE 2 courses should be taken in different events.

TOTAL NUMBER OF UNITS: 125 UNITS

GE Courses

Domain	Course Title	Units
Arts and Humanities (AH) 12		
▪ AH I	Wika 1	3
▪ AH II	Comm 10	3
▪ AH III	Arts I	3
▪ AH IV	Elective Course	3
Natural Sciences and Mathematics (NSM) 12		
▪ NSM I	Science 10	3
▪ NSM II	Science 11	3
▪ NSM III	STS 1	3
▪ NSM IV	Elective Course	3
Social Sciences and Philosophy (SSP) 12		
▪ SSP I	Kas 1/Hist I	3
▪ SSP II	SAS 1	3
▪ SSP III	Ethics 1	3
▪ SSP IV	Elective Course	3

Core Courses

Course	Course Title	19 units	Pre-requisite
Social Science 100	Historical Context of the Social Sciences	3	
Social Science 101	Fundamental Statistics for the Social Sciences	4	
Social Science 180	Epistemological Issues in the Social Sciences	3	SS
Social Science 197	Ontology of the Social	3	JS
Social Science 198	Special Topics	3	SS (may be repeated once)
Social Science 199	Seminar on Social Science Methodology	3	Soc Sci 101/Psych 110

Other Required Courses

Course	Course Title	10 Units	Pre-requisite
PI 100	The Life & Works of Rizal	3	JS
Comm 11/ Kom 11	Advanced College Writing/ SulatingPangkolehiyo: Pagsusuri at Pagsulat	3	
Math 100	Introduction to Calculus	4	Math 17/COI

Major Concentration: Economics

Required Courses	Course Title	30 units	Pre-requisite
Economics 101	Macroeconomics	4	
Economics 102	Microeconomics	4	
Economics 106	Elements of Mathematical Economics	3	Econ 101, 102; Math 100
Economics 121	Monetary Economics	3	Econ 101, 102
Economics 131	Introduction to Quantitative Economics	4	Econ 101, 102; Math 100; Soc Sci 101
Economics 141	International Economics	3	Econ 101, 102
Economics 151	Public Economics	3	Econ 101, 102
Economics 191	Development Economics	3	Econ 101, 102
Economics 200	Bachelor's Thesis	3	SS, Soc Sci 199
Electives		6 units	
Any two of the following:			
Economics 109	History of Economic Thought	3	Econ 101, 102
Economics 110	Methods of Economic History	3	Econ 101, 102
Economics 116	The Economies of Asia	3	Econ 101, 102
Economics 142	International Trade Policies	3	Econ 141/COI
Economics 152	Taxation and Fiscal Policy	3	Econ 151/COI
Economics 161	Industrial Organization	3	Econ 101, 102
Economics 171	Economics of Agriculture	3	Econ 101, 102
Economics 181	Labor Economics	3	Econ 101, 102
Economics 189	Comparative Economic Systems	3	Econ 101, 102
Economics 194	Economic Anthropology	3	Econ 101, 102
Economics 195	Reading Course in Economics	3	Econ 101, 102 (may be taken twice)
Economics 198	Special Topics in Economics	3	Econ 101, 102 (may be taken twice provided the topics are not identical)

Minor Discipline: Psychology

Required Courses	Course Title	15 units	Pre-requisite
Psychology 101	General Psychology	3	
Psychology 140	Behavior Analysis	3	Psych 11/101/written COI
Psychology 150	Personality	3	Psych 11/101/written COI
Psychology 155	Abnormal Behavior	3	Psych 140,150/COI
Psychology 180	Social Psychology	3	Psych 150/COI
Electives		9 units	
Any combination of the following to total 9 units			
Psychology 115	Experimental Psychology	5	Soc Sci 101
Psychology 135	Perception	3	Psych 11/101, 115/written COI
Psychology 145	Psychology of Language	3	Psych 140/COI
Psychology 160	Physiological Psychology	4	SS
Psychology 162	Psychological Measurement	4	Stat course, Psych 115, 150/COI
Psychology 163	Psychological Interview	3	Psych 150/COI
Psychology 171	Child Psychology	3	Psych 150/COI
Psychology 172	Adolescent Psychology	3	Psych 150
Psychology 181	Special Topics in Group Dynamics	3	
Psychology 182	Filipino Psychology	3	Psych 150, 180
Psychology 195	Special Topics in Psychology	3	SS (may be taken twice provided the topics are not identical)

Or any upper division course in the Social Sciences recommended by the discipline.

PE and NSTP Courses

Required Courses	Course Title		Pre-requisite
PE 1	Foundations of Physical Fitness	(2)	
PE 2 (3 events)	Physical Education Activities (Beginners)	(2) each	
NSTP 1	National Service Training Program	(3)	
NSTP 2	National Service Training Program	(3)	

Major Concentration: Economics
Minor Discipline: Sociology

FIRST YEAR

First Semester	Units	Sem & AY Taken	Grade	Second Semester	Units	Sem & AY Taken	Grade
GE 1 - AH I (Wika 1)	3			GE 4 - AH II (Comm 10)	3		
GE 2 - SSP I (Kas 1/Hist I)	3			GE 5 - NSM I (Science 10)	3		
GE 3 - SSP II (SAS 1)	3			GE 6 - NSM II (Science 11)	3		
Math 100	4			GE 7 - SSP III (Ethics 1)	3		
Economics 101	4			Economics 102	4		
P.E. 1	(2)			P.E. 2*	(2)		
Total	17			Total	16		

SECOND YEAR

First Semester	Units	Sem & AY Taken	Grade	Second Semester	Units	Sem & AY Taken	Grade
GE 8 - AH III (Arts I)	3			GE 10 - NSM III (STS 1)	3		
GE 9 - SP IV (Elective)	3			Social Science 100	3		
Comm 11 / Kom11	3			Social Science 101	4		
Economics 106	3			Economics 151	3		
Economics 121	3			Sociology 114	3		
Sociology 101	3			Sociology 142	3		
P.E. 2*	(2)			P.E. 2*	(2)		
NSTP 1	(3)			NSTP 2	(3)		
Total	18			Total	19		

THIRD YEAR

First Semester	Units	Sem & AY Taken	Grade	Second Semester	Units	Sem & AY Taken	Grade
GE 11 - NSM IV (Elective)	3			GE 12 - AH IV (Elective)	3		
Social Science 197	3			Social Science 199	3		
Economics 131	4			Economics Elective 2	3		
Economics Elective 1	3			Economics 141	3		
Sociology 195	3			Economics 191	3		
				Sociology 132	3		
Total	16			Total	18		

FOURTH YEAR

First Semester	Units	Sem & AY Taken	Grade	Second Semester	Units	Sem & AY Taken	Grade
PI 100	3			Sociology 153	3		
Economics 200	3			Social Science 198	3		
Sociology 160	3						
Sociology Elective	3						
Social Science 180	3						
Total	15			Total	6		

* PE 2 courses should be taken in different events.

TOTAL NUMBER OF UNITS: 125 UNITS

GE Courses

Domain	Course Title	Units
Arts and Humanities (AH)		12
<ul style="list-style-type: none"> ▪ AH I ▪ AH II ▪ AH III ▪ AH IV 	Wika 1 Comm 10 Arts I Elective Course	3 3 3 3
Natural Sciences and Mathematics (NSM)		12
<ul style="list-style-type: none"> ▪ NSM I ▪ NSM II ▪ NSM III ▪ NSM IV 	Science 10 Science 11 STS 1 Elective Course	3 3 3 3
Social Sciences and Philosophy (SSP)		12
<ul style="list-style-type: none"> ▪ SSP I ▪ SSP II ▪ SSP III ▪ SSP IV 	Kas 1/Hist I SAS 1 Ethics 1 Elective Course	3 3 3 3

Core Courses

Course	Course Title	19 units	Pre-requisite
Social Science 100	Historical Context of the Social Sciences	3	
Social Science 101	Fundamental Statistics for the Social Sciences	4	
Social Science 180	Epistemological Issues in the Social Sciences	3	SS
Social Science 197	Ontology of the Social	3	JS
Social Science 198	Special Topics	3	SS (may be repeated once)
Social Science 199	Seminar on Social Science Methodology	3	Soc Sci 101/Psych 110

Other Required Courses

Course	Course Title	10 Units	Pre-requisite
PI 100	The Life & Works of Rizal	3	JS
Comm 11/ Kom 11	Advanced College Writing/ SulatingPangkolehiyo: Pagsusuri at Pagsulat	3	
Math 100	Introduction to Calculus	4	Math 17/COI

Major Concentration: Economics

Required Courses	Course Title	30 units	Pre-requisite
Economics 101	Macroeconomics	4	
Economics 102	Microeconomics	4	
Economics 106	Elements of Mathematical Economics	3	Econ 101, 102; Math 100
Economics 121	Monetary Economics	3	Econ 101, 102
Economics 131	Introduction to Quantitative Economics	4	Econ 101, 102; Math 100; Soc Sci 101
Economics 141	International Economics	3	Econ 101, 102
Economics 151	Public Economics	3	Econ 101, 102
Economics 191	Development Economics	3	Econ 101, 102
Economics 200	Bachelor's Thesis	3	SS, Soc Sci 199
Electives		6 units	
Any two of the following:			
Economics 109	History of Economic Thought	3	Econ 101, 102
Economics 110	Methods of Economic History	3	Econ 101, 102
Economics 116	The Economies of Asia	3	Econ 101, 102
Economics 142	International Trade Policies	3	Econ 141/COI
Economics 152	Taxation and Fiscal Policy	3	Econ 151/COI
Economics 161	Industrial Organization	3	Econ 101, 102
Economics 171	Economics of Agriculture	3	Econ 101, 102
Economics 181	Labor Economics	3	Econ 101, 102
Economics 189	Comparative Economic Systems	3	Econ 101, 102
Economics 194	Economic Anthropology	3	Econ 101, 102
Economics 195	Reading Course in Economics	3	Econ 101, 102 (may be taken twice)
Economics 198	Special Topics in Economics	3	Econ 101, 102 (may be taken twice provided the topics are not identical)

Minor Discipline: Sociology

Required Courses	Course Title	21 units	Pre-requisite
Sociology 101	General Sociology	3	
Sociology 114	The Philippine Social System	3	Socio 101/equi
Sociology 132	Sociology of Deviant Behavior	3	Socio 101/equi
Sociology 142	Sociology of Mass Communication	3	Socio 101/equi
Sociology 153	Sociology of Development	3	Socio 101/equi, Socio 195
Sociology 160	Society & Population	3	Socio 101/equi
Sociology 195	Sociological Theories	3	Socio 101/equi
Electives		3 units	
Any of the following			
Sociology 102	Social Organization	3	Socio 101/equi
Sociology 109	Comparative Social Structure	3	Socio 101/equi
Sociology 119	Industrial Sociology	3	Socio 101/equi
Sociology 125	Sociology of Religion	3	Socio 101/equi
Sociology 126	Urban Sociology	3	Socio 101/equi
Sociology 198	Special Topics in Sociology	3	Socio 101/equi
Sociology 199	Methods of Sociological Research	3	Socio 195, SS 101

PE and NSTP Courses

Required Courses	Course Title		Pre-requisite
PE 1	Foundations of Physical Fitness	(2)	
PE 2 (3 events)	Physical Education Activities (Beginners)	(2) each	
NSTP 1	National Service Training Program	(3)	
NSTP 2	National Service Training Program	(3)	

Major Concentration: History
Minor Discipline: Philosophy

FIRST YEAR

First Semester	Units	Sem & AY Taken	Grade	Second Semester	Units	Sem & AY Taken	Grade
GE 1 - SSP I (Kas 1/Hist I)	3			GE 5 - SSP III (Ethics 1)	3		
GE 2 - SSP II (SAS 1)	3			GE 6 - SSP IV (Elective)	3		
GE 3 - AH I (Wika 1)	3			GE 7 - AH II (Comm 10)	3		
GE 4 - NSM I (Science 10)	3			GE 8 - NSM II (Science 11)	3		
History 100	3			History 102	3		
P.E. 1	(2)			P.E. 2*	(2)		
Total	15			Total	15		

SECOND YEAR

First Semester	Units	Sem & AY Taken	Grade	Second Semester	Units	Sem & AY Taken	Grade
Foreign Language 1.1	3			Foreign Language 1.2	3		
Social Science 100	3			Comm 11 / Kom 11	3		
History 113	3			Social Science 101	4		
History 114	3			History 112	3		
Philosophy 11	3			History 117	3		
Philosophy 110	3			Philosophy 111	3		
P.E. 2*	(2)			P.E. 2*	(2)		
NSTP 1	(3)			NSTP 2	(3)		
Total	18			Total	19		

THIRD YEAR

First Semester	Units	Sem & AY Taken	Grade	Second Semester	Units	Sem & AY Taken	Grade
GE 9- AH III (Arts I)	3			GE 11 - NSM III (STS 1)	3		
GE 10 - AH IV (Elective)	3			GE 12 - NSM IV (Elective)	3		
Social Science 197	3			Social Science 199	3		
History 154	3			History 119	3		
History 199	3			History 151	3		
Philosophy 112	3			Philosophy 113	3		
Total	18			Total	18		

FOURTH YEAR

First Semester	Units	Sem & AY Taken	Grade	Second Semester	Units	Sem & AY Taken	Grade
Social Science 180	3			Social Science 198	3		
History 200	3			PI 100	3		
History Elective 1	3			History Elective 2	3		
Philosophy 171	3			Philosophy 150	3		
Philosophy 130	3			Philosophy Elective	3		
Total	15			Total	15		

* PE 2 courses should be taken in different events.

TOTAL NUMBER OF UNITS: 133 UNITS

GE Courses

Domain	Course Title	Units
Arts and Humanities (AH)		12
<ul style="list-style-type: none"> ▪ AH I ▪ AH II ▪ AH III ▪ AH IV 	Wika 1 Comm 10 Arts I Elective Course	3 3 3 3
Natural Sciences and Mathematics (NSM)		12
<ul style="list-style-type: none"> ▪ NSM I ▪ NSM II ▪ NSM III ▪ NSM IV 	Science 10 Science 11 STS 1 Elective Course	3 3 3 3
Social Sciences and Philosophy (SSP)		12
<ul style="list-style-type: none"> ▪ SSP I ▪ SSP II ▪ SSP III ▪ SSP IV 	Kas 1/Hist I SAS 1 Ethics 1 Elective Course	3 3 3 3

Core Courses

Course	Course Title	19 units	Pre-requisite
Social Science 100	Historical Context of the Social Sciences	3	
Social Science 101	Fundamental Statistics for the Social Sciences	4	
Social Science 180	Epistemological Issues in the Social Sciences	3	SS
Social Science 197	Ontology of the Social	3	JS
Social Science 198	Special Topics	3	SS (may be repeated once)
Social Science 199	Seminar on Social Science Methodology	3	Soc Sci 101/Psych 110

Other Required Courses

Course	Course Title	12 Units	Pre-requisite
PI 100	The Life & Works of Rizal	3	JS
Comm 11/ Kom 11	Advanced College Writing/ SulatingPangkolehiyo: Pagsusuri at Pagsulat	3	
FL 1.1	Foreign Language 1.1	3	
FL 1.2	Foreign Language 1.2	3	

Major Concentration: History

Required Courses	Course Title	33 units	Pre-requisite
History 100	Introduction to World Civilizations	3	
History 102	Modern Europe	3	
History 112	Economic History of the Philippines	3	
History 113	Political History of the Philippines	3	
History 114	Cultural History of the Philippines	3	
History 117	History of the Cordillera and Northern Luzon	3	
History 119	History of Indigenous Peoples/Ethnic Minorities in Southeast Asia	3	
History 151	History of East Asia	3	
History 154	History of Southeast Asia	3	
History 199	Historical Methodology	3	
History 200	Bachelor's Thesis	3	Hist 199, Soc Sci 199, SS
Electives	Any two of the following	6 units	
History 106	History of Spain	3	
History 110	Colonial Philippines I	3	
History 115	Philippine Revolution	3	
History 116	Philippine Nationalism	3	
History 120	Directed Readings in Philippine History	3	
History 140	The Philippines and the Third World	3	
History 141	History of Latin America	3	
History 168	History of the United States	3	
History 198	Special Topics in History	3	SS (may be taken twice provided topics are not identical)

Minor Discipline: Philosophy

Required Courses	Course Title	24 units	Pre-requisite
Philosophy 11	Logic	3	
Philosophy 110	Ancient Philosophy	3	
Philosophy 111	Medieval Philosophy	3	
Philosophy 112	Modern Philosophy	3	
Philosophy 113	Contemporary Philosophy	3	
Philosophy 130	Metaphysics	3	
Philosophy 150	Epistemology	3	
Philosophy 171	Ethics	3	
Electives	Any of the following	3 units	
Philosophy 125	Indian Philosophy	3	
Philosophy 126	Chinese Philosophy	3	
Philosophy 170	Philosophy of Man	3	
Philosophy 177	Issues in Filipino Philosophy	3	
Philosophy 194	Directed Readings in Philosophy	3	JS/COI
Philosophy 198	Special Problems	3	SS (may be taken twice)

PE and NSTP Courses

Required Courses	Course Title		Pre-requisite
PE 1	Foundations of Physical Fitness	(2)	
PE 2 (3 events)	Physical Education Activities (Beginners)	(2) each	
NSTP 1	National Service Training Program	(3)	
NSTP 2	National Service Training Program	(3)	

Major Concentration: History
Minor Discipline: Political Science

FIRST YEAR

First Semester	Units	Sem & AY Taken	Grade	Second Semester	Units	Sem & AY Taken	Grade
GE 1 - SSP I (Kas 1/Hist I)	3			GE 5 - SSP III (Ethics 1)	3		
GE 2 - SSP II (SAS 1)	3			GE 6 - SSP IV (Elective)	3		
GE 3 - AH I (Wika 1)	3			GE 7 - AH II (Comm 10)	3		
GE 4 - NSM I (Science 10)	3			GE 8 - NSM II (Science 11)	3		
History 100	3			History 102	3		
P.E. 1	(2)			Political Science 100	3		
				P.E. 2*	(2)		
Total	15			Total	18		

SECOND YEAR

First Semester	Units	Sem & AY Taken	Grade	Second Semester	Units	Sem & AY Taken	Grade
Foreign Language 1.1	3			Foreign Language 1.2	3		
Comm 11 / Kom 11	3			Social Science 101	4		
Social Science 100	3			History 112	3		
History 113	3			History 117	3		
History 114	3			Political Science 150	3		
Political Science 160	3			Political Science Elective 1	3		
P.E. 2*	(2)			P.E. 2*	(2)		
NSTP 1	(3)			NSTP 2	(3)		
Total	18			Total	19		

THIRD YEAR

First Semester	Units	Sem & AY Taken	Grade	Second Semester	Units	Sem & AY Taken	Grade
GE 9 - AH III (Arts I)	3			Second Semester	Units		
GE 10 - AH IV (Elective)	3			GE 11 - NSM III (STS 1)	3		
Social Science 197	3			GE 12 - NSM IV (Elective)	3		
History 154	3			Social Science 199	3		
History 199	3			History 119	3		
Political Science 178	3			History 151	3		
				Political Science 182	3		
Total	18			Total	18		

FOURTH YEAR

First Semester	Units	Sem & AY Taken	Grade	Second Semester	Units	Sem & AY Taken	Grade
Social Science 180	3			Social Science 198	3		
History 200	3			PI 100	3		
History Elective 1	3			History Elective 2	3		
Political Science Elective 2	3						
Political Science 192	3						
Total	15			Total	9		

* PE 2 courses should be taken in different events.

TOTAL NUMBER OF UNITS: 130 UNITS

GE Courses

Domain	Course Title	Units
Arts and Humanities (AH)		12
<ul style="list-style-type: none"> ▪ AH I ▪ AH II ▪ AH III ▪ AH IV 	Wika 1 Comm 10 Arts I Elective Course	3 3 3 3
Natural Sciences and Mathematics (NSM)		12
<ul style="list-style-type: none"> ▪ NSM I ▪ NSM II ▪ NSM III ▪ NSM IV 	Science 10 Science 11 STS 1 Elective Course	3 3 3 3
Social Sciences and Philosophy (SSP)		12
<ul style="list-style-type: none"> ▪ SSP I ▪ SSP II ▪ SSP III ▪ SSP IV 	Kas 1/Hist I SAS 1 Ethics 1 Elective Course	3 3 3 3

Core Courses

Course	Course Title	19 units	Pre-requisite
Social Science 100	Historical Context of the Social Sciences	3	
Social Science 101	Fundamental Statistics for the Social Sciences	4	
Social Science 180	Epistemological Issues in the Social Sciences	3	SS
Social Science 197	Ontology of the Social	3	JS
Social Science 198	Special Topics	3	SS (may be repeated once)
Social Science 199	Seminar on Social Science Methodology	3	Soc Sci 101/Psych 110

Other Required Courses

Course	Course Title	12 Units	Pre-requisite
PI 100	The Life & Works of Rizal	3	JS
Comm 11/ Kom 11	Advanced College Writing/ SulatingPangkolehiyo: Pagsusuri at Pagsulat	3	
FL 1.1	Foreign Language 1.1	3	
FL 1.2	Foreign Language 1.2	3	

Major Concentration: History

Required Courses	Course Title	33 units	Pre-requisite
History 100	Introduction to World Civilizations	3	
History 102	Modern Europe	3	
History 112	Economic History of the Philippines	3	
History 113	Political History of the Philippines	3	
History 114	Cultural History of the Philippines	3	
History 117	History of the Cordillera and Northern Luzon	3	
History 119	History of Indigenous Peoples/Ethnic Minorities in Southeast Asia	3	
History 151	History of East Asia	3	
History 154	History of Southeast Asia	3	
History 199	Historical Methodology	3	
History 200	Bachelor's Thesis	3	Hist 199, Soc Sci 199, SS
Electives	Any two of the following	6 units	
History 106	History of Spain	3	
History 110	Colonial Philippines I	3	
History 115	Philippine Revolution	3	
History 116	Philippine Nationalism	3	
History 120	Directed Readings in Philippine History	3	
History 140	The Philippines and the Third World	3	
History 141	History of Latin America	3	
History 168	History of the United States	3	
History 198	Special Topics in History	3	SS (may be taken twice provided topics are not identical)

Minor Discipline: Political Science

Required Courses	Course Title	18 Units	Pre-requisite
Political Science 100	Approaches to Understanding Political Phenomena	3	
Political Science 150	Philippine National and Local Administration	3	Pol Sci 100
Political Science 160	Society, Politics and Government	3	Pol Sci 100
Political Science 178	Government and Politics in Southeast Asia	3	Pol Sci 100
Political Science 182	International Politics	3	Pol Sci 100
Political Science 192	Ancient & Medieval Political Theory	3	SS
Electives	Any two of the following	6 units	
Political Science 151	The Philippine Executive	3	Pol Sci 100
Political Science 152	Philippine Legislative System	3	Pol Sci 100
Political Science 153	The Philippine Judicial System	3	Pol Sci 100
Political Science 161	Political Parties and Interest Groups	3	Pol Sci 100
Political Science 163	Political Behavior: Processes and Movements	3	Pol Sci 160/COI
Political Science 171	American Government and Politics	3	Pol Sci 100
Political Science 172	Government and Politics of Selected European States	3	Pol Sci 100
Political Science 177	Government and Politics of East Asia	3	Pol Sci 100
Political Science 179	Government and Politics of South Asia	3	Pol Sci 100
Political Science 183	International Organization	3	Pol Sci 182
Political Science 185	Public International Law	3	Pol Sci 182
Political Science 186	Private International Law	3	Pol Sci 182
Political Science 190	Practicum	3	JS
Political Science 193	Modern Political Theory	3	SS
Political Science 194	American Political Theory	3	Pol Sci 171/COI
Political Science 197	Directed Study in Political Science	3	SS
Political Science 198	Special Topics	3	SS (may be repeated once)

PE and NSTP Courses

Required Courses	Course Title		Pre-requisite
PE 1	Foundations of Physical Fitness	(2)	
PE 2 (3 events)	Physical Education Activities (Beginners)	(2) each	
NSTP 1	National Service Training Program	(3)	
NSTP 2	National Service Training Program	(3)	

Major Concentration: History
Minor Discipline: Psychology

FIRST YEAR							
First Semester	Units	Sem & AY Taken	Grade	Second Semester	Units	Sem & AY Taken	Grade
GE 1 - SSP I (Kas 1/Hist I)	3			GE 5 - SSP III (Ethics 1)	3		
GE 2 - SSP II (SAS 1)	3			GE 6 - SSP IV (Elective)	3		
GE 3 - AH I (Wika 1)	3			GE 7 - AH II (Comm 10)	3		
GE 4 - NSM I (Science 10)	3			GE 8 - NSM II (Science 11)	3		
History 100	3			History 102	3		
P.E. 1	(2)			P.E. 2*	(2)		
Total	15			Total	15		

SECOND YEAR							
First Semester	Units	Sem & AY Taken	Grade	Second Semester	Units	Sem & AY Taken	Grade
Foreign Lang 1.1	3			Foreign Lang 1.2	3		
Comm 11 / Kom 11	3			Social Science 101	4		
Social Science 100	3			History 112	3		
History 113	3			History 117	3		
History 114	3			Psychology 150	3		
Psychology 101	3			P.E. 2*	(2)		
P.E. 2*	(2)			NSTP 2	(3)		
NSTP 1	(3)						
Total	18			Total	16		

THIRD YEAR							
First Semester	Units	Sem & AY Taken	Grade	Second Semester	Units	Sem & AY Taken	Grade
GE 9 - AH III (Arts I)	3			GE 11 - NSM III (STS 1)	3		
GE 10 - AH IV (Elective)	3			GE 12 - NSM IV (Elective)	3		
Social Science 197	3			Social Science 199	3		
History 154	3			History 119	3		
History 199	3			History 151	3		
Psychology 140	3			Psychology 180	3		
Total	18			Total	18		

FOURTH YEAR							
First Semester	Units	Sem & AY Taken	Grade	Second Semester	Units	Sem & AY Taken	Grade
Social Science 180	3			Social Science 198	3		
History 200	3			PI 100	3		
History Elective 1	3			History Elective 2	3		
Psychology 155	3			Psychology Elective 2	3		
Psychology Elective 1	3			Psychology Elective 3	3		
Total	15			Total	15		

* PE 2 courses should be taken in different events.

TOTAL NUMBER OF UNITS: 130 UNITS

GE Courses

Domain	Course Title	Units
Arts and Humanities (AH)		
		12
<ul style="list-style-type: none"> ▪ AH I ▪ AH II ▪ AH III ▪ AH IV 	Wika 1 Comm 10 Arts I Elective Course	3 3 3 3
Natural Sciences and Mathematics (NSM)		
		12
<ul style="list-style-type: none"> ▪ NSM I ▪ NSM II ▪ NSM III ▪ NSM IV 	Science 10 Science 11 STS 1 Elective Course	3 3 3 3
Social Sciences and Philosophy (SSP)		
		12
<ul style="list-style-type: none"> ▪ SSP I ▪ SSP II ▪ SSP III ▪ SSP IV 	Kas 1/Hist I SAS 1 Ethics 1 Elective Course	3 3 3 3

Core Courses

Course	Course Title	19 units	Pre-requisite
Social Science 100	Historical Context of the Social Sciences	3	
Social Science 101	Fundamental Statistics for the Social Sciences	4	
Social Science 180	Epistemological Issues in the Social Sciences	3	SS
Social Science 197	Ontology of the Social	3	JS
Social Science 198	Special Topics	3	SS (may be repeated once)
Social Science 199	Seminar on Social Science Methodology	3	Soc Sci 101/Psych 110

Other Required Courses

Course	Course Title	12 Units	Pre-requisite
PI 100	The Life & Works of Rizal	3	JS
Comm 11/ Kom 11	Advanced College Writing/ SulatingPangkolehiyo: Pagsusuri at Pagsulat	3	
FL 1.1	Foreign Language 1.1	3	
FL 1.2	Foreign Language 1.2	3	

Major Concentration: History

Required Courses	Course Title	33 units	Pre-requisite
History 100	Introduction to World Civilizations	3	
History 102	Modern Europe	3	
History 112	Economic History of the Philippines	3	
History 113	Political History of the Philippines	3	
History 114	Cultural History of the Philippines	3	
History 117	History of the Cordillera and Northern Luzon	3	
History 119	History of Indigenous Peoples/Ethnic Minorities in Southeast Asia	3	
History 151	History of East Asia	3	
History 154	History of Southeast Asia	3	
History 199	Historical Methodology	3	
History 200	Bachelor's Thesis	3	Hist 199, Soc Sci 199, SS
Electives	Any two of the following	6 units	
History 106	History of Spain	3	
History 110	Colonial Philippines I	3	
History 115	Philippine Revolution	3	
History 116	Philippine Nationalism	3	
History 120	Directed Readings in Philippine History	3	
History 140	The Philippines and the Third World	3	
History 141	History of Latin America	3	
History 168	History of the United States	3	
History 198	Special Topics in History	3	SS (may be taken twice provided topics are not identical)

Minor Discipline: Psychology

Required Courses	Course Title	15 units	Pre-requisite
Psychology 101	General Psychology	3	
Psychology 140	Behavior Analysis	3	Psych 11/101/written COI
Psychology 150	Personality	3	Psych 11/101/written COI
Psychology 155	Abnormal Behavior	3	Psych 140,150/COI
Psychology 180	Social Psychology	3	Psych 150/COI
Electives	Any combination of the following to total 9 units	9 units	
Psychology 115	Experimental Psychology	5	Soc.Sci 101
Psychology 135	Perception	3	Psych 11/101, 115/written COI
Psychology 145	Psychology of Language	3	Psych 140/COI
Psychology 160	Physiological Psychology	4	SS
Psychology 162	Psychological Measurement	4	Stat course, Psych 115, 150/COI
Psychology 163	Psychological Interview	3	Psych 150/COI
Psychology 171	Child Psychology	3	Psych 150/COI
Psychology 172	Adolescent Psychology	3	Psych 150
Psychology 181	Special Topics in Group Dynamics	3	
Psychology 182	Filipino Psychology	3	Psych 150, 180
Psychology 195	Special Topics in Psychology	3	SS (may be taken twice provided the topics are not identical)

Or any upper division course in the Social Sciences recommended by the discipline.

PE and NSTP Courses

Required Courses	Course Title		Pre-requisite
PE 1	Foundations of Physical Fitness	(2)	
PE 2 (3 events)	Physical Education Activities (Beginners)	(2) each	
NSTP 1	National Service Training Program	(3)	
NSTP 2	National Service Training Program	(3)	

Major Concentration: History
Minor Discipline: Sociology

FIRST YEAR

First Semester	Units	Sem & AY Taken	Grade	Second Semester	Units	Sem & AY Taken	Grade
GE 1 - SSP I (Kas 1/Hist I)	3			GE 5 - SSP III (Ethics 1)	3		
GE 2 - SSP II (SAS 1)	3			GE 6 - SSP IV (Elective)	3		
GE 3 - AH I (Wika 1)	3			GE 7 - AH II (Comm 10)	3		
GE 4 - NSM I (Science 10)	3			GE 8 - NSM II (Science 11)	3		
History 100	3			History 102	3		
P.E. 1	(2)			P.E. 2*	(2)		
Total	15			Total	15		

SECOND YEAR

First Semester	Units	Sem & AY Taken	Grade	Second Semester	Units	Sem & AY Taken	Grade
Foreign Language 1.1	3			Foreign Language 1.2	3		
Com 11 / Kom 11	3			Social Science 101	4		
Social Science 100	3			History 112	3		
History 113	3			History 117	3		
History 114	3			Sociology 114	3		
Sociology 101	3			Sociology 142	3		
P.E. 2*	(2)			P.E. 2*	(2)		
NSTP 1	(3)			NSTP 2	(3)		
Total	18			Total	19		

THIRD YEAR

First Semester	Units	Sem & AY Taken	Grade	Second Semester	Units	Sem & AY Taken	Grade
GE 9 - AH III (Arts 1)	3			GE 11 - NSM III (STS 1)	3		
GE 10 - AH IV (Elective)	3			GE 12 - NSM IV (Elective)	3		
Social Science 197	3			Social Science 199	3		
History 154	3			History 119	3		
History 199	3			History 151	3		
Sociology 195	3			Sociology 132	3		
Total	18			Total	18		

FOURTH YEAR

First Semester	Units	Sem & AY Taken	Grade	Second Semester	Units	Sem & AY Taken	Grade
Social Science 180	3			Social Science 198	3		
History 200	3			PI 100	3		
History Elective 1	3			History Elective 2	3		
Sociology 160	3			Sociology 153	3		
Sociology Elective	3						
Total	15			Total	12		

* PE 2 courses should be taken in different events.

TOTAL NUMBER OF UNITS: 130 UNITS

GE Courses

Domain	Course Title	Units
Arts and Humanities (AH)		
		12
<ul style="list-style-type: none"> ▪ AH I ▪ AH II ▪ AH III ▪ AH IV 	<ul style="list-style-type: none"> Wika 1 Comm 10 Arts I Elective Course 	<ul style="list-style-type: none"> 3 3 3 3
Natural Sciences and Mathematics (NSM)		
		12
<ul style="list-style-type: none"> ▪ NSM I ▪ NSM II ▪ NSM III ▪ NSM IV 	<ul style="list-style-type: none"> Science 10 Science 11 STS 1 Elective Course 	<ul style="list-style-type: none"> 3 3 3 3
Social Sciences and Philosophy (SSP)		
		12
<ul style="list-style-type: none"> ▪ SSP I ▪ SSP II ▪ SSP III ▪ SSP IV 	<ul style="list-style-type: none"> Kas 1/Hist I SAS 1 Ethics 1 Elective Course 	<ul style="list-style-type: none"> 3 3 3 3

Core Courses

Course	Course Title	19 units	Pre-requisite
Social Science 100	Historical Context of the Social Sciences	3	
Social Science 101	Fundamental Statistics for the Social Sciences	4	
Social Science 180	Epistemological Issues in the Social Sciences	3	SS
Social Science 197	Ontology of the Social	3	JS
Social Science 198	Special Topics	3	SS (may be repeated once)
Social Science 199	Seminar on Social Science Methodology	3	Soc Sci 101/Psych 110

Other Required Courses

Course	Course Title	12 Units	Pre-requisite
PI 100	The Life & Works of Rizal	3	JS
Comm 11/ Kom 11	Advanced College Writing/ SulatingPangkolehiyo: Pagsusuri at Pagsulat	3	
FL 1.1	Foreign Language 1.1	3	
FL 1.2	Foreign Language 1.2	3	

Major Concentration: History

Required Courses	Course Title	33 units	Pre-requisite
History 100	Introduction to World Civilizations	3	
History 102	Modern Europe	3	
History 112	Economic History of the Philippines	3	
History 113	Political History of the Philippines	3	
History 114	Cultural History of the Philippines	3	
History 117	History of the Cordillera and Northern Luzon	3	
History 119	History of Indigenous Peoples/Ethnic Minorities in Southeast Asia	3	
History 151	History of East Asia	3	
History 154	History of Southeast Asia	3	
History 199	Historical Methodology	3	
History 200	Bachelor's Thesis	3	Hist 199, Soc Sci 199, SS
Electives	Any two of the following	6 units	
History 106	History of Spain	3	
History 110	Colonial Philippines I	3	
History 115	Philippine Revolution	3	
History 116	Philippine Nationalism	3	
History 120	Directed Readings in Philippine History	3	
History 140	The Philippines and the Third World	3	
History 141	History of Latin America	3	
History 168	History of the United States	3	
History 198	Special Topics in History	3	SS (may be taken twice provided topics are not identical)

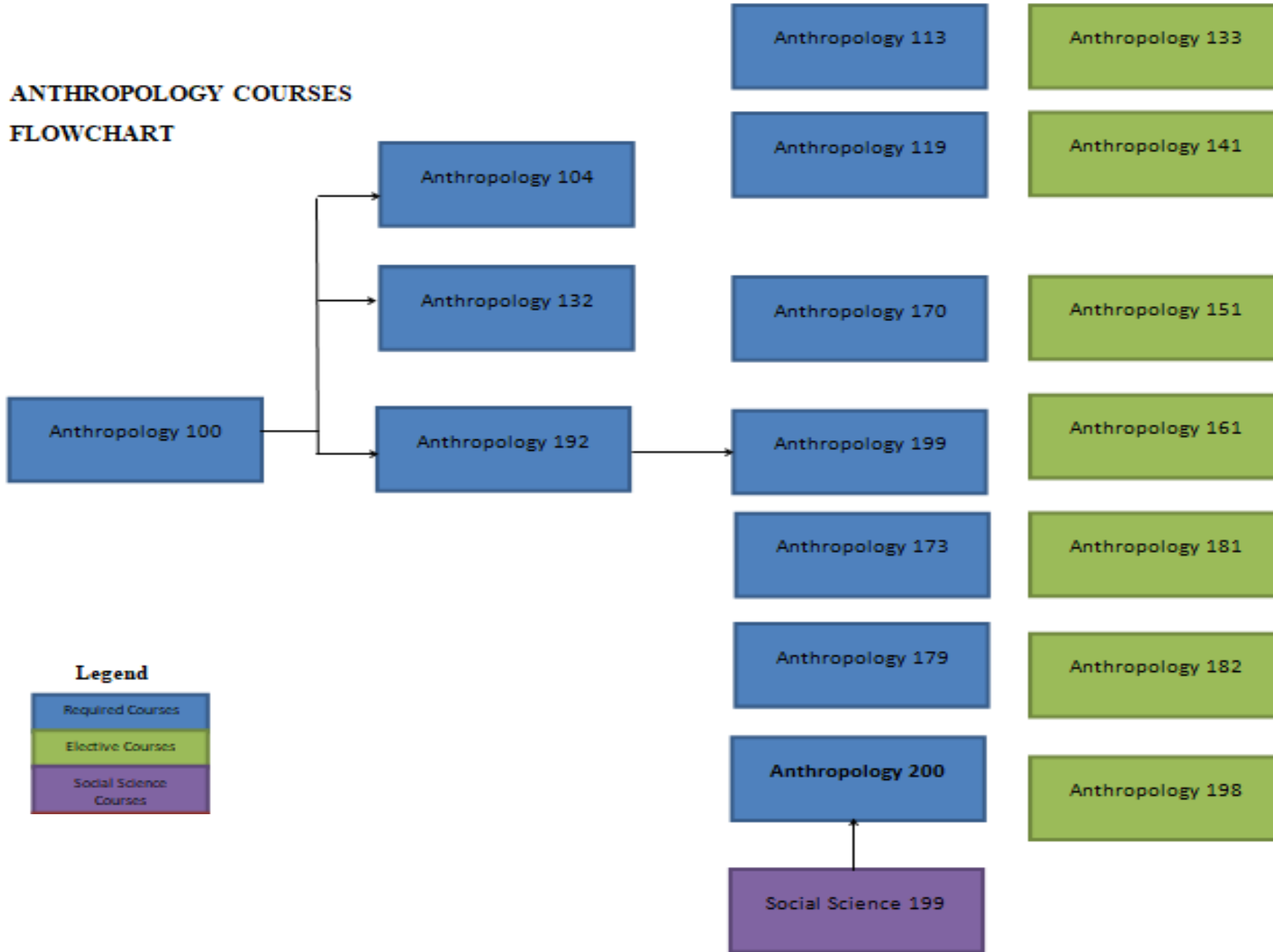
Minor Discipline: Sociology

Required Courses	Course Title	21 units	Pre-requisite
Sociology 101	General Sociology	3	
Sociology 114	The Philippine Social System	3	Socio 101/equi
Sociology 132	Sociology of Deviant Behavior	3	Socio 101/equi
Sociology 142	Sociology of Mass Communication	3	Socio 101/equi
Sociology 153	Sociology of Development	3	Socio 101/equi, Socio 195
Sociology 160	Society & Population	3	Socio 101/equi
Sociology 195	Sociological Theories	3	Socio 101/equi
Electives	Any of the following	3 units	
Sociology 102	Social Organization	3	Socio 101/equi
Sociology 109	Comparative Social Structure	3	Socio 101/equi
Sociology 119	Industrial Sociology	3	Socio 101/equi
Sociology 125	Sociology of Religion	3	Socio 101/equi
Sociology 126	Urban Sociology	3	Socio 101/equi
Sociology 198	Special Topics in Sociology	3	Socio 101/equi
Sociology 199	Methods of Sociological Research	3	Socio 195, SS 101

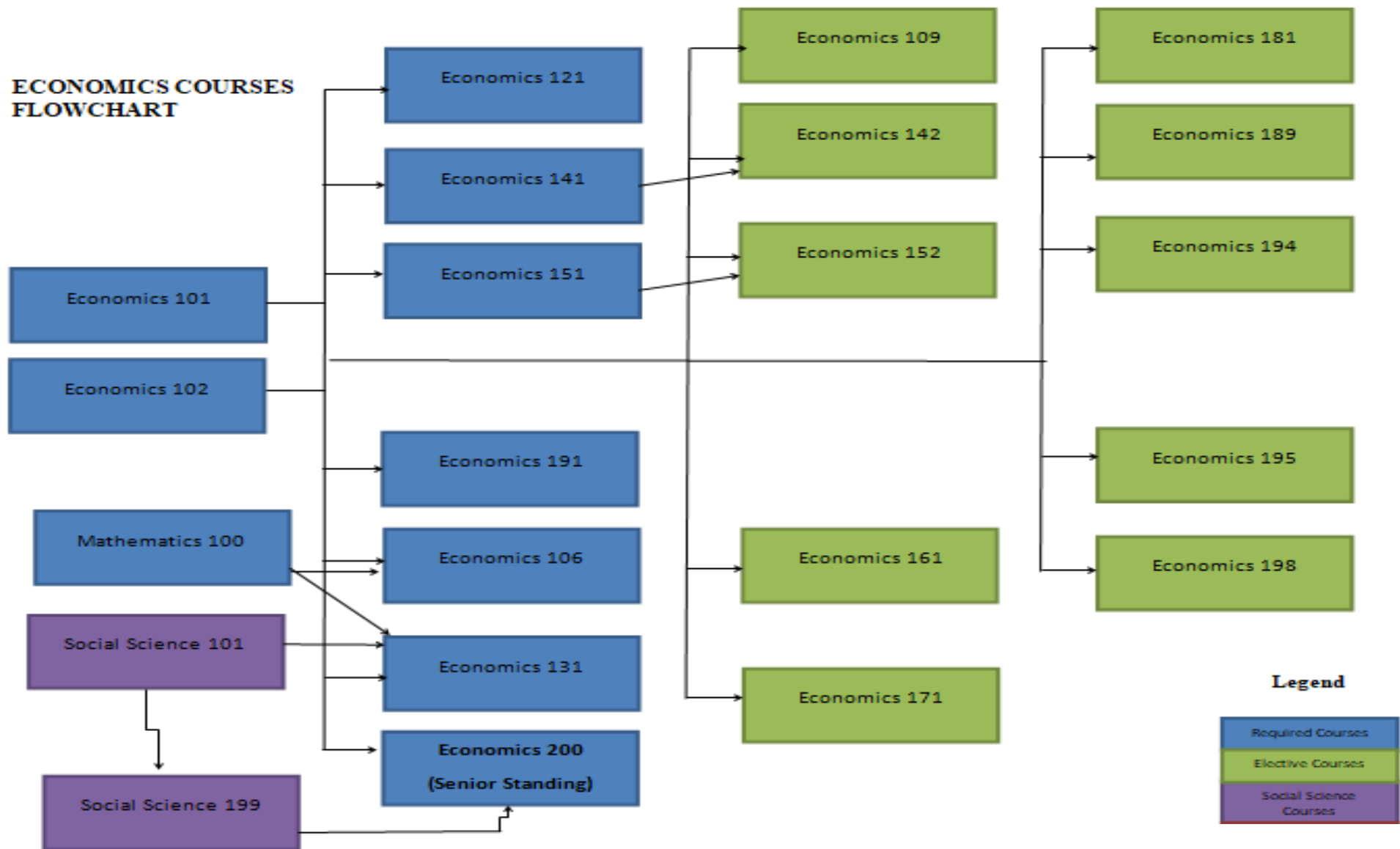
PE and NSTP Courses

Required Courses	Course Title		Pre-requisite
PE 1	Foundations of Physical Fitness	(2)	
PE 2 (3 events)	Physical Education Activities (Beginners)	(2) each	
NSTP 1	National Service Training Program	(3)	
NSTP 2	National Service Training Program	(3)	

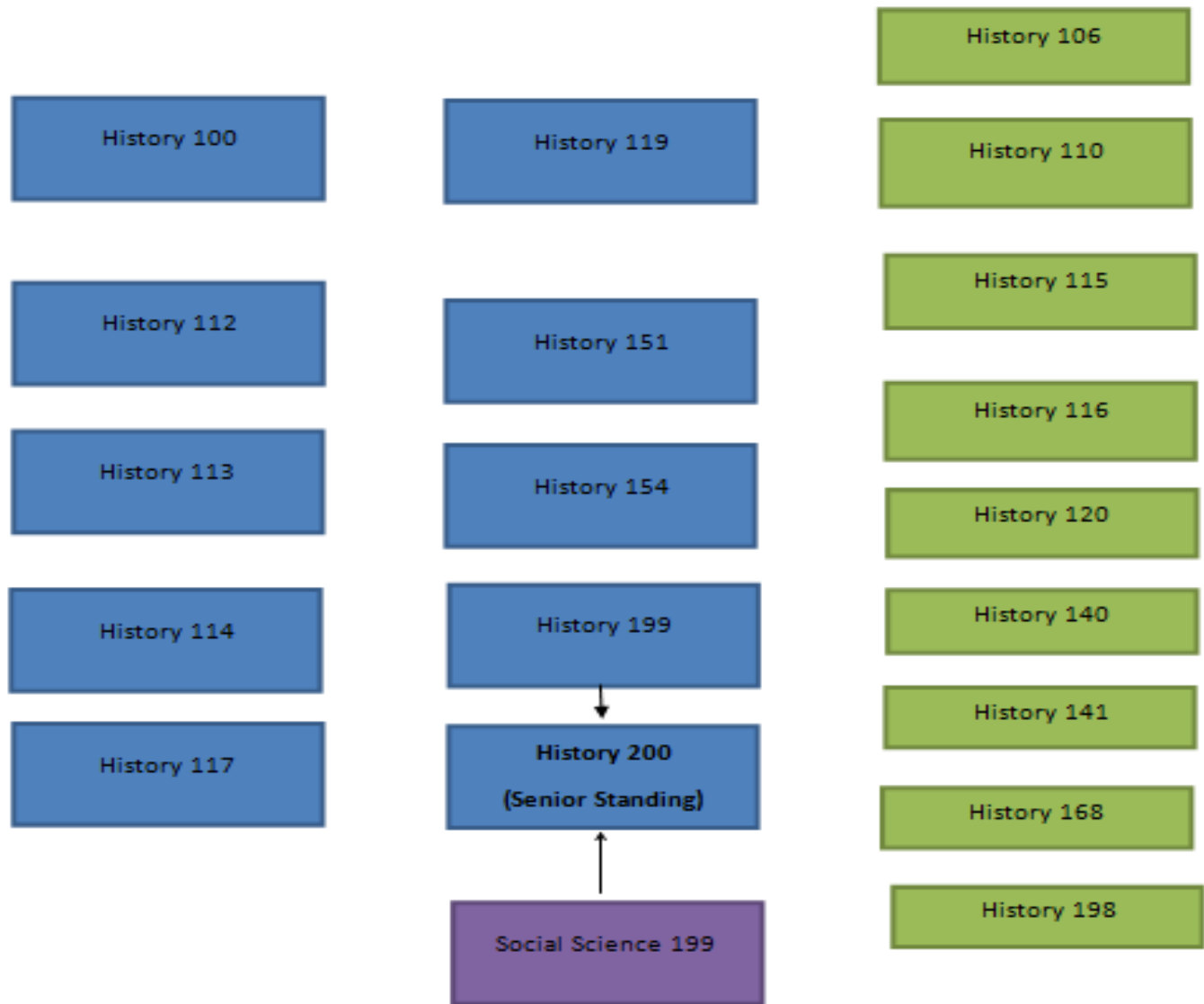
**ANTHROPOLOGY COURSES
FLOWCHART**



**ECONOMICS COURSES
FLOWCHART**



**HISTORY COURSES
FLOWCHART**



PHILOSOPHY COURSES FLOWCHART



Philo 11

Philo 110

Philo 111

Philo 112

Philo 113

Philo 130

Philo 150

Philo 171

Philo 125

Philo 126

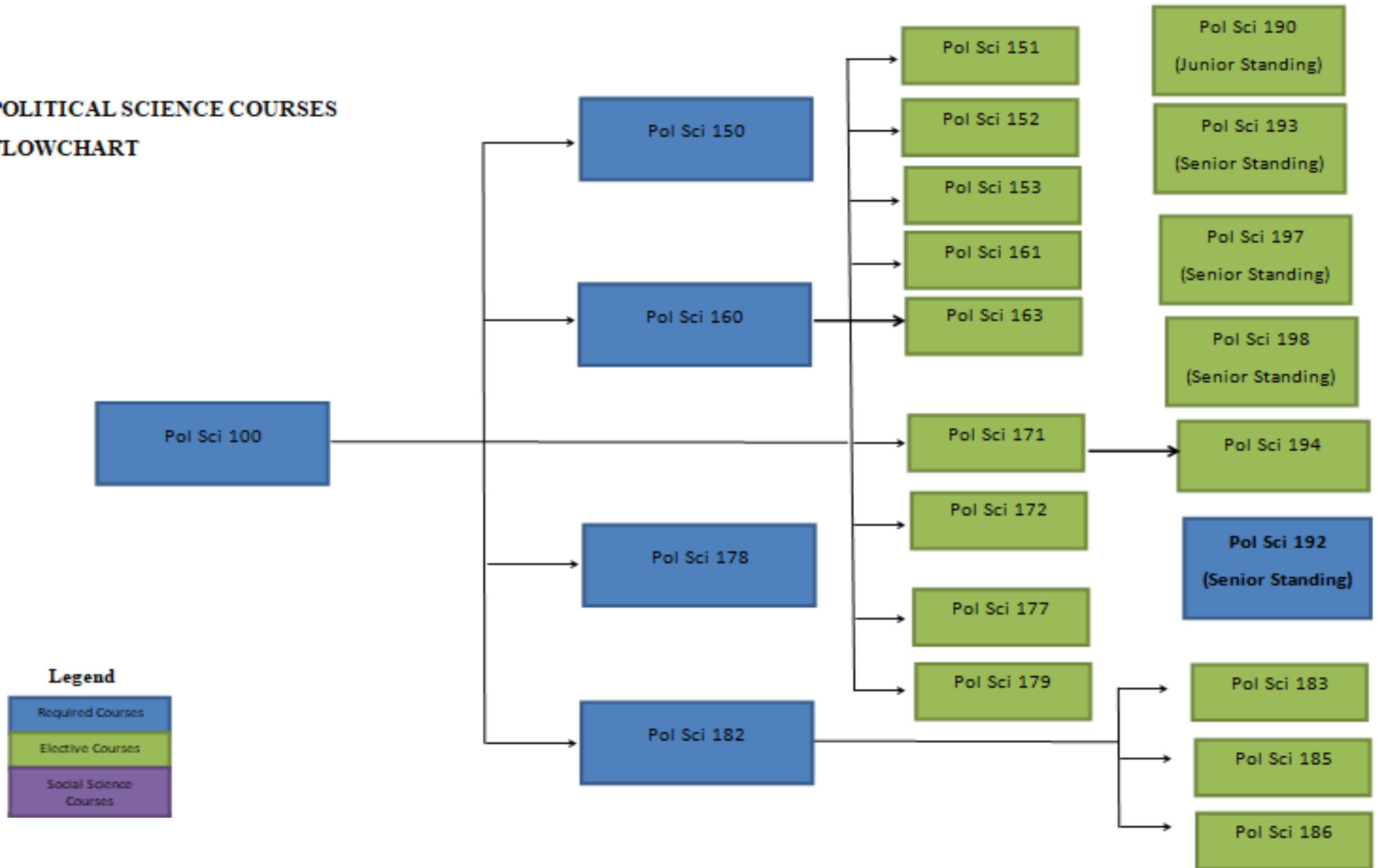
Philo 170

Philo 177

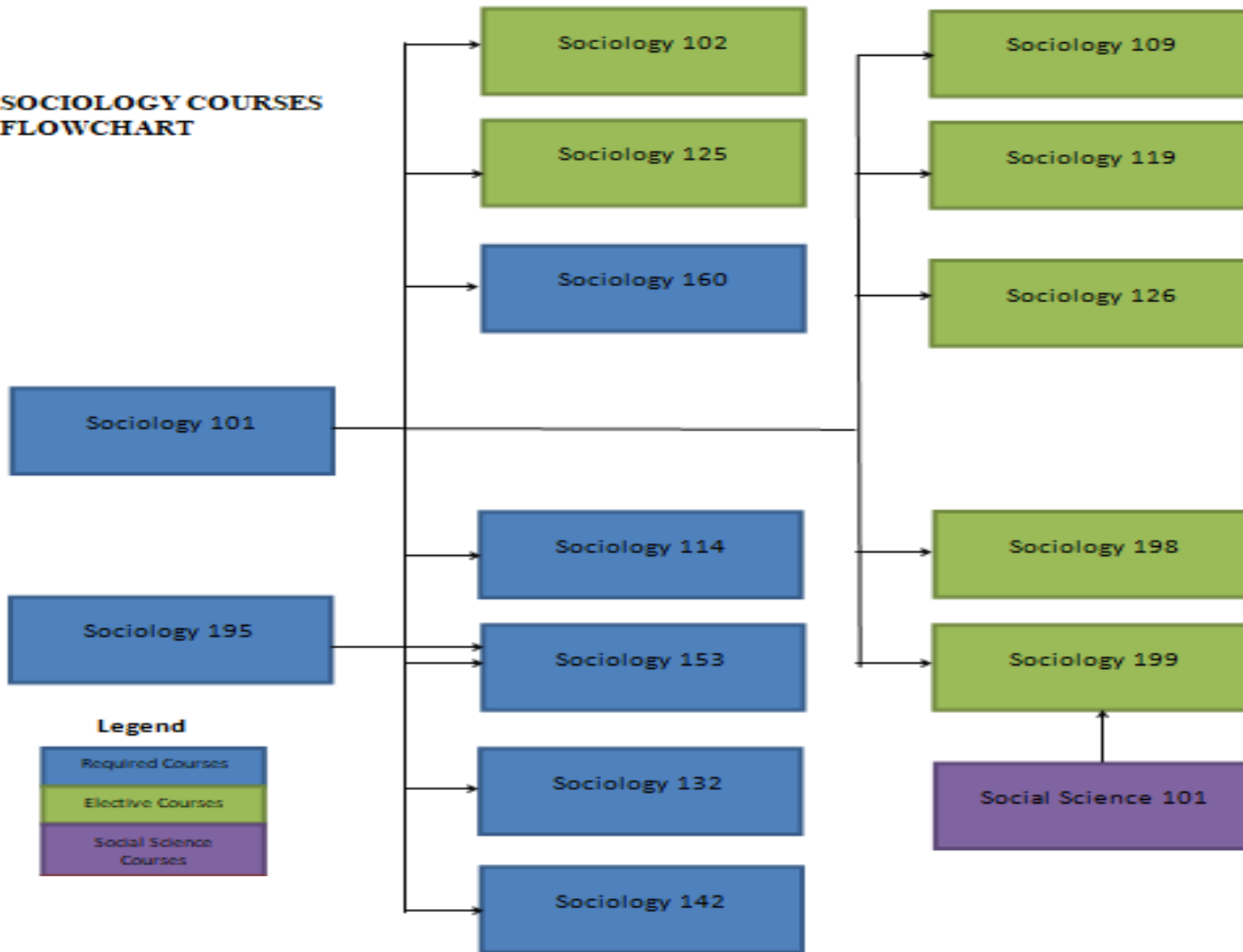
Philo 194
(Junior Standing)

Philo 198
(Senior Standing)

**POLITICAL SCIENCE COURSES
FLOWCHART**



**SOCIOLOGY COURSES
FLOWCHART**



INFORMATION on ADMISSION

CLASSIFICATION OF STUDENTS

Undergraduate and graduate students are designated as regular and non-regular. Regular undergraduate students follow organized programs of study and comply with requirements which lead to the bachelor's degree or undergraduate diploma/certificate. They carry the full semestral load called for by their respective curricula, and for registration and classification purposes are divided generally into freshmen, sophomores, juniors, and seniors.

Non-regular students are: (1) non-degree students, with credits; (2) non-majors, with credits; (3) cross-registrants, with credits; or (4) special students, without credit.

ADMISSION

The BA Social Sciences program admits UPCAT qualifiers during the 1st semester of the academic year. Transfer students and UP Baguio students who would like to shift to the BASS program shall be governed by existing University/College rules and regulations.

No student shall be denied admission to the University by reason of age, sex, nationality, religious belief, or political affiliation.

Every applicant for admission shall undergo a thorough health examination. No person shall be admitted to this University who is found by the University Health Service to be suffering from dangerous, communicable, contagious, or infectious disease or who is physically unfit to take courses in any college of the University.

Every student shall, upon admission, sign the following pledge: "In consideration of my admission to the University of the Philippines and of the privileges of a student in this institution, I hereby promise and pledge to abide by and comply with all the rules and regulations laid down by competent authority in the University and in the college or school in which I am enrolled." Refusal to take this pledge or violation of its terms shall be sufficient cause for denial of admission or summary dismissal.

No person who has not duly matriculated may be admitted to the classes. In exceptional cases, the University Registrar may, on recommendation of the Dean concerned, authorize the admission of a visitor to a class for not more than five sessions.

Beginning Freshmen

Graduates of accredited high schools may be admitted as freshmen on the basis of their (1)

performance in the UP College Admission Test (UPCAT), (2) weighted average in the first three years of high school, and (3) choice of UP campus and the quota for specific courses/colleges set by the University. For applicants to the Certificate in Fine Arts program, a GWA of 80% based on 4th year HS grades, and passing the Talent Determination Test in lieu of the UPCAT, are required.

UP College Admission Test (UPCAT)

The UPCAT is a 4-hour examination consisting of sub-tests in language proficiency, reading comprehension, mathematics and science. It is administered in English and Filipino.

All freshmen applicants are required to take the UPCAT, including honor graduates, recipients of scholarships (public and private), and Filipino and foreign graduates of secondary schools abroad. The only exceptions to this rule are applicants for admission into the pre-baccalaureate certificate or diploma programs. There are also courses which require students to pass a talent test.

Eligible to take the UPCAT are:

1. Students of DepEd-accredited high schools who have not taken the UPCAT previously and are high school seniors (i.e. Fourth Year/Grade 12) expecting to graduate at the end of the school year; or high school graduates who have not taken and/or are not taking any college subject;
2. Those declared eligible for admission to college *after* taking the Philippine Educational Placement Test (PEPT).

In both 1 and 2 above, the applicants must have final grades corresponding to the First, Second, and Third Year of the 4-year secondary school curriculum in DepEd-accredited high schools (or grades 9, 10 and 11 for international/foreign and similar schools.)

The UPCAT is usually administered on the first weekend of August in Diliman, Quezon City, and in other test centers all over the country.

Advanced Placement Examinations (APE)

A new freshman who qualifies for and passes the prescribed examination in basic courses in the freshman year such as Communication I and other languages, General Education courses, College Algebra and/or Plane Trigonometry, etc., within one year from his enrollment in the University, shall be given credit for corresponding subjects in his academic program provided that this privilege is not given for more than 6 units in any one discipline. These examinations are usually

scheduled two weeks before registration every semester.

Application forms and more information may be obtained from the College Secretary of the college concerned.

Holders of the International Baccalaureate (IB) diploma/certificate may apply for advanced credits for certain projects they had taken. However, the total credits that may be granted including automatic credits shall not exceed 15 units per subject area.

Deferment of Enrollment

A qualified freshman applicant who for a valid reason cannot enroll during the semester originally applied for may apply for deferment of enrollment to the next succeeding semester by writing to the University Registrar. Such applicant must not take any academic college subject prior to enrollment in the University. The maximum period allowed by the University for deferment of enrollment is one year.

Beginning Foreign Freshman

Applicants who graduated from high schools abroad and who have not enrolled in college may be admitted as beginning freshmen into a non-quota program without taking the UPCAT, provided that they meet the following requirements:

1. Completion of the high school program in the country where they had their secondary education (includes completion of a one- or two-year pre-university education in a country where such is a prerequisite for admission to a bachelor's degree program);
2. Passing a college qualifying national or international foreign-administered examination such as the General Certificate of Education (GCE) Examination or the Scholastic Aptitude Test (SAT) or equivalent examination:

GCE: 3 ordinary level passes and 2 advanced level passes
SAT: minimum total score of 1200
IBE: International Baccalaureate Diploma; and
3. In the case of an applicant whose native language or whose medium of instruction in the secondary school is not English, a minimum score of 500 in the Test of English as a Foreign Language (TOEFL)

or a minimum score of 173 in the computerized TOEFL.

Information about the test, including the places and dates of administration, may be obtained by writing directly to TOEFL, Educational Testing Service, Princeton, New Jersey 08540, USA. The applicant may request that a copy of one's scores be sent to the Office of the University Registrar, University of the Philippines Baguio, Baguio City 2600.

A graduate from a high school abroad who failed to satisfy the requirements for automatic admission (i.e. item 2 above) may take the UPCAT.

A Filipino who graduates from a secondary school abroad and applies for freshman admission to the University must satisfy the same requirements as those of foreign students.

A student holding dual citizenship (e.g. Filipino-American, Filipino-Chinese) who wishes to be considered as Filipino for the purpose of studying in the University of the Philippines must submit *prior to admission* a copy of the order of the Identification Certificate issued by the Bureau of Immigration. Students who choose to be classified as Filipino during their initial enrollment will be considered Filipino until their graduation.

NON-REGULAR ADMISSION

Non-Degree Students

A degree holder or undergraduate student who is not currently enrolled in any other institution of higher learning may be allowed to take courses for credit on the graduate and/or undergraduate level, respectively, provided that this student satisfies the appropriate requirements for admission to the University. He shall not be allowed to enroll for more than one semester, except by special permission of the Dean of the college concerned and the University Registrar.

Since he does not follow any organized program of study, a non-degree student is not a prospective candidate for graduation for any degree in the University.

Special Students

A mature student, even if he does not fully satisfy the entrance requirements, may be admitted as a special student and may enroll for such subjects which, in the opinion of the instructor and the Dean, he has the necessary information and ability to pursue profitably. He shall not be allowed to enroll for more than 9 units a semester or to register for more than two years, except by special permission of the Dean. Subjects taken shall be non-credit although his work may be reported at

the end of each semester as “satisfactory” or “unsatisfactory.”

TRANSFER STUDENTS

Transfer within UP

Students from another constituent university who have completed at least 30 collegiate academic units may be admitted as transfer students subject to the rules of the admitting college.

Subjects cross-enrolled will not be considered for the purpose of meeting the unit requirement.

UP students may transfer from one program to another within the college or may transfer from one program or college to another within an autonomous campus, subject to the rules of the admitting program.

Transfer from other Universities and Colleges

A student with previous college work wishing to transfer to the University must satisfy University rules indicated below on admission of transfer students. Deadlines for applications for transfer are set in the academic calendar for each academic year.

In general, transfer applicants may be admitted provided that:

1. they can present at least 33 academic units with a general weighted average of 2.00 or better for all the collegiate academic units they have taken outside the University;
2. they will have to complete in the University not less than 50% of the units required for their program, 75% if running for honors;
3. if transferring to a second degree, must complete all professional courses and all third and fourth year subjects;
4. the quota set by the Dean of the college concerned has not been filled up.

Requirements for Submission

New transfer applicants should submit the following at least one month prior to the registration period:

1. an official copy of transcript of records (true copy of grades is accepted for evaluation purposes) from all schools attended;
2. 2 passport-sized (2x2) photographs; and
3. a non-refundable application fee of PhP100 for Filipinos (PhP150 for resident foreign applicants) or US\$20 for non-resident foreign applicants.

If qualified, they should submit an official copy of their transcript of records and certificate of

honorable dismissal before the University admission slip can be issued. If credentials submitted are confirmed to be spurious, admission will be revoked.

Validation of Advanced Credits

Admitted undergraduate transfer students with less than 66 academic units must validate all subjects they are offering for advanced credits at the rate of at least 18 units a semester from the date of their admission. Their admission will be on probation basis until they shall have validated or repeated, in accordance with the rule of validation of courses, all subjects taken outside UP which are required for their course. No one will be allowed to enroll in a subject the prerequisite of which, taken elsewhere, has not yet been validated, or repeated, as the case may be.

Application for advanced credits should be made on the prescribed form to the Dean of the college where the student has been admitted. The regular period for validation tests is set in the academic calendar for each academic year. There is no fee for validation tests taken during the period. A validation test may be held outside of this period with the consent of the department and the approval of the Dean and upon payment of a fee. A student transferee who possesses an Associate in Arts or its equivalent of 66 units of work may be enrolled without validation. Before a student is allowed to major in any discipline, however, the major discipline may prescribe additional courses up to 18 units of general education courses, and/or preparatory courses for the major.

The grant of advanced credits for courses which are completed in other institutions but which have no equivalent in this University shall be left to the faculty of the unit concerned.

FOREIGN STUDENTS TRANSFER ADMISSION

Foreign students with credits for college-level course work should meet the University requirements for transfer students.

A TOEFL score of 500, or 173 in the computerized form, is required of applicants whose medium of instruction in the school they attended is not English.

Applicants transferring from another Philippine school should secure a permit to transfer from DepEd.

Foreign freshman applicants who qualify under automatic admission as well as qualified transfer

applicants may choose a degree program only from non-quota programs.

Requirements for Submission

Only properly accomplished application forms with all the requirements listed below will be processed:

1. accomplished application form (UP Form No. 3.2);
2. a non-refundable application fee of PhP150 for resident foreign or US\$20 for non-resident foreign students in the form of a money order, cashier's or manager's check payable to the University of the Philippines;
3. two copies of one's official transcript of records from each high school and college attended and official certifications, if any; for evaluation purposes, photocopies of records may be accepted provided that they are properly authenticated by the Department of Education or by duly designated authorities in the country of the applicant. Final admission will be subject to verification of documents submitted against original copies of credentials. Certified English translation should also be submitted, when necessary;
4. course syllabus, school catalogue and handbook of examination;
5. two copies of certification from a reputable bank in the applicant's country about his/her capability to finance the travel, educational, and personal and other expenses he/she is expected to incur in his/her studies in the Philippines;
6. official TOEFL results; and
7. copy of birth certificate or passport duly authenticated.

Credentials filed in support of an application become the property of the University the Philippines and will not be returned to the applicant.

Immigration Requirements

Foreign students may be allowed to enroll only if they have a student visa (9-f) or any of the following types of visa:

1. 9(e), 9(e-1) or 9(e-2) – foreign government official or dependent
2. 47(a) (2) – exchange fellow or scholar sponsored by an international organization
3. 9(g) – pre-arranged employment (working/missionary visa)
4. PD 218 – foreign investor
5. 9(d) – treaty trader
6. 13, 13(a) to 13(g) – permanent resident
7. SRR V – Special Resident Retiree Visa
8. SIR V - Special Investor Resident Visa

CROSS-REGISTRATION

Within the University

A student who wants to register in another UP campus must fill out the cross-registration form. The total number of units of credit for which students may register in another campus in this university should not exceed the maximum allowed by the rules on academic load.

Full cross-registration in any other UP campus shall be allowed only when a graduating student that particular semester needs required subject/s which is/are not offered in the student's mother campus or health reasons necessitating prolonged medical treatment.

NOTE: Units earned as cross-registrant in another UP campus are not counted towards the 30-unit requirement for admission as a transfer student to other UP campuses. Freshmen are not allowed to cross-register.

Additional UPB Policies on Cross-registration

1. A student may cross-register only for a maximum of two semesters (excluding summer).
2. He/she must be in good standing during the semester immediately preceding his/her cross-enrollment.
3. He/she must not have been subject to any disciplinary action.

From Another Institution

Students who are registered in another institution and who wish to cross-register in UP must present a permit from their Dean or Registrar. The permit should state, in writing, the total number of units for which the student is to be registered and the subjects that he/she is authorized to take in the University.

To Another Institution

The University gives no credit for any course taken by any of its students in any other institution unless the taking of such course was authorized by the Chancellor. Such cross-registration may be authorized if the student is graduating and the course necessary for his/her graduation is not offered in UP in that particular semester. This written authorization is to be recorded by the University Registrar and should specify the subjects authorized. Courses taken outside the University under these rules need not be validated.

COURSE and PROGRAM POLICIES

ACADEMIC YEAR

The Academic Year is divided into two semesters of at least 16 weeks each, exclusive of registration and final examination periods. A summer session of 6 weeks follows the second semester.

COURSE NUMBERING

In general, courses in the lower division (freshman and sophomore years) are numbered 1 to 99; courses in the upper division (junior and senior years) are numbered 100 to 200; and graduate courses are numbered 201 to 400. Courses numbered 301 and above are generally courses in the doctoral program.

CREDIT UNIT

The unit of credit is the semester hour. Most classes taught at the University meet 3 hours a week; these classes carry 48 clock hours of instruction and 3 units of credit.

Each unit of credit is at least 16 semester-hours of instruction in the form of lecture, discussion, seminar, tutorial or recitation or any combination of these forms.

ACADEMIC LOAD

For undergraduate students the academic load is a maximum of 18 non-laboratory units, or 21 units including laboratory, except in courses where the normal semestral load is more than 18 units. However, graduating students with very good academic record may be permitted to carry heavier load in their last year. During the summer session, the normal load is 6 units, but in justifiable cases the Dean may allow up to 9 units.

On the graduate level, full-time students are allowed the normal load of 12 units or a maximum of 14 units. During the summer session, the normal load is 6 units. Unless there is prior approval from the Dean for a heavier load, a graduate student employed on a full-time basis is allowed an academic load of not more 10 units in any semester, whether in formal courses or in thesis work.

LANGUAGE POLICY

The UPLanguage Policy provides for the development and use of the Filipino language while maintaining English as a global lingua franca. The Policy states that Filipino shall be the medium of instruction in the University at the undergraduate level, within a reasonable time-frame or transition period. Graduate courses of study shall be in English, though there could very well be graduated courses of study in which the medium of instruction is Filipino. English shall be maintained

as the primary international language in the University to serve as its chief medium of access to the world's intellectual discourse. [1021st BOR meeting, May 29, 1989]

WAIVER OF PREREQUISITES

Courses approved by the University Council as prerequisites to other courses may not be waived.

However, in meritorious cases, a student who has previously enrolled and fully attended a course that is a prerequisite to another may be allowed to enroll and attend the latter course for credit, without having passed or earned credit for the prerequisite course.

No permission shall be granted except upon application by the student. The application shall be accompanied by a certification that the student had fully attended the prerequisite course from the student's instructor in said course. The application, furthermore, shall be accompanied by a certification from the Director for Student Affairs that the student's failure to pass or earn credit in the prerequisite course was not due to disciplinary action imposed on him.

Each college or school shall be authorized to grant the permission and shall act through a Dean's committee which shall determine the merit of the application, said committee to include the College Secretary.

The student who is granted permission under these rules is required to enroll in the prerequisite course simultaneously with the course to which the former is a prerequisite, or immediately in the next semester.

The permission which may be granted under these rules does not apply to courses in the General Education Program.

DROPPING OF COURSES

A student may, with the consent of his/her instructor and the Dean, drop a subject by filling out the prescribed UPForm 26 before 3/4 of the hours prescribed for the semester have lapsed, and not later. Any student who drops a course without the approval of the Dean shall have his/her registration privileges curtailed or entirely withdrawn. If a subject is dropped after the middle of the term, the faculty member concerned shall indicate the date and the class standing of the student at the time of dropping as either "Passing" or "Failing" solely for administrative guidance.

SUBSTITUTION OF COURSES

Every substitution of subjects must be based on at least one of the following:

1. when a student's curriculum has been superseded by a new one and the substitution tends to bring the old curriculum in line with the new;	1	Excellent
	1.25	
	1.5	Very Good
2. when there is conflict of hours between two required subjects; or	1.75	
	2	Good
3. when the required subject is not offered during the semester the student needs it.	2.25	
	2.5	Satisfactory
	2.75	
Every Substitution	3	Pass
1. must involve subjects within the same department; if not, the two subjects concerned must be allied to each other;	4	Conditional
2. must be between subjects in which the subject substituted carries a number of units equal to or greater than the units of the required subject;	5	Fail
3. must be recommended by the adviser and by the heads of the departments concerned.	INC	Incomplete

All petitions for substitution must be submitted to the Office of the Dean concerned before 12% of the regular class meetings have been held. No substitution shall be allowed for any subject prescribed in the curriculum in which the student has failed or received a grade of "5," except when, in the opinion of the department offering the prescribed subject, the proposed substitution covers substantially the same subject matter as the required subject.

ATTENDANCE

Any student who, for unavoidable cause, absents him/herself from class must obtain an excuse slip from the Dean to be presented to the instructor concerned not later than the second class session following the student's return. In addition, in case the absence is due to illness, a certification to this effect must be secured from the medical officer of the College.

Excuses are for time missed only. All work covered by the class during the absence shall be made up for the satisfaction of the instructor within a reasonable time from the date of absence. When the number of hours lost by absence of a student reaches 20% of the hours of the scheduled work in one class, he/she shall be dropped from the class. However, a faculty member may prescribe a longer attendance requirement to meet special needs. If the majority of the absences are excused, the student shall not be given a grade of "5" upon being thus dropped; otherwise, he/she shall be given a grade of "5". Time lost by late enrollment shall be considered as time lost by absence.

GRADING SYSTEM

The work of students shall be graded at the end of each semester/summer term in accordance with the following system:

"4" means conditional failure. It may be made up for by successful repetition of the course, or by passing a re-examination. Students are given a grade of "3" if they pass the re-examination, "5" if they fail. Only one re-examination which must be taken within the prescribed time is allowed. If a student does not remove the grade of "4" within the prescribed time, he/she may earn credit for the course only by repeating and passing it. A grade of "4" given for the first semester work of a two-semester course shall be converted to a grade of "3" if the student passes the second semester part of the same course in the same academic year; if he/she fails, the grade of "4" which he/she received for the first semester work shall be converted to a grade of "5".

The grade of "INC" is given if a student whose class standing throughout the semester is "Passing," fails to take the final examination or fails to complete other requirements for the course due to illness or other valid reasons. In case the class standing is not passing and the student fails to take the final examination for any reason, a grade of "5" is given. Removal of the "INC" must be done within the prescribed time by passing an examination or meeting all the requirements for the course, after which the student shall be given a final grade based on his/her overall performance.

Clearing of Grades of "Incomplete" or "4"

Examinations for the completion or removal of grades of "Incomplete (INC)" or "4" may be taken without fee: (1) during the regular examination period, if the subject is included in the schedule of examinations, and (2) during the removal examination period, viz., the period covering ten days preceding the registration in each semester during which case, the examination is taken at the time it is scheduled.

Clearing examinations may be taken at other times on the recommendation of the Dean and upon payment of the clearing fee. Students not in residence shall pay the registration fee besides the

examination fee in order to be entitled to take the removal/completion examination.

There shall be a regular period for clearing grades of "4" and "INC" before the start of each semester. Such a grade may no longer be improved after the end of the third regular removal period immediately following the semester/term in which the grade was incurred. A grade of "4" received after clearing a grade of "INC," however, must be removed within the remaining portion of the prescribed period for the clearing of the original grade of "INC."

Note:

1. No removal/completion examination should be given without a duly approved permit to take such examination (NO PERMIT, NO EXAM). The Office of the University Registrar will not accept any removal/completion grade without the accompanying approved permit for examination.
2. The removal or completion grades and the date of the examination must be hand-written on the report of grades by the instructor.
3. Removal/completion grades shall be submitted one week after the examination is given.

Change of Grades

A student who has received a passing grade in a given course is not allowed a reexamination for the purpose of improving his/her grade.

No faculty member shall change any grade after the report has been filed with the Secretary of the college or with the University Registrar. In exceptional cases, as where an error has been committed, the instructor may request authority from the faculty of his/her college to make the necessary change. If the request is granted, a copy of the resolution of the faculty authorizing the change shall be forwarded to the Office of the University Registrar for recording and filing.

Notwithstanding the foregoing provision and to avoid any injustice, the grade on a final examination paper may be revised by a committee of the Dean of the college if it should clearly appear, on the basis of the quality of the scholastic record of the student, that such grade is the result of an erroneous appreciation of the answers or of an arbitrary or careless decision by the faculty member concerned. Should the change of the grade on said paper affect the final grade of the student, the committee may request authority from the faculty of the college to make the necessary change in the final grade. The request for reconsideration shall be made within 30 days after the receipt of the final grade by the student concerned.

No student of the University shall directly or indirectly ask any person to recommend him/her to

his/her professor/s for any grade in his/her class record, examination paper, or final report of grades. Any student violating this rule shall lose credit in the subject/s regarding which such recommendation is made. The fact that a student is thus recommended shall be *prima facie* evidence that the recommendation is made at the request of the student concerned.

LEAVE OF ABSENCE

A leave of absence should be requested in a written petition to the Dean. The petition should state the reason for which the leave is desired and specify the period of the leave. The leave should not exceed one year, but may be renewed for at most another year. When not taken in two successive years, the aggregate leave of absence should not exceed two years.

For leave of absence availed of during the second half of the semester, the faculty members concerned shall be required to indicate the class standing (passing or failing) of the student at the time of the application for the leave. No application for leave of absence shall be approved without indication of the student's class standing by the instructors concerned. This, however, should not be entered in the Official Report of Grades. Students who withdraw after 3/4 of the total amount of hours prescribed for the course has already lapsed, may be given a grade of "5" if their class standing up to the time of their withdrawal is below "3."

No leave of absence shall be granted later than two weeks before the last day of classes during the semester. If the inability to continue with classes is due to illness or similar justifiable causes, the student's absence during this period shall be considered excused. In such cases, the student shall be required to present an excuse slip to the faculty members concerned.

Students who withdraw from the College without formal leave of absence shall have their registration privileges curtailed or entirely withdrawn.

MAXIMUM RESIDENCE RULE

An undergraduate student must finish the requirements of a course within a period of actual residence equivalent to 1 1/2 times the normal length prescribed for the course; otherwise, he/she shall not be allowed to register further.

READMISSION

Applications for readmission on the undergraduate level must be filed with the Committee on Admission, Readmission, and Student Progress for proper action and recommendation to the Chancellor. The deadline for such application is set in the academic calendar for each academic year.

HONORABLE DISMISSAL

A student in good standing who desires to sever connection with the University shall present a written petition to this effect to the University Registrar signed by his/her parent or guardian. If the petition is granted, the student shall be given honorable dismissal. Generally, honorable dismissal is voluntary withdrawal from the University with the consent of the University Registrar or his/her representative. All indebtedness to the University must be settled before a statement of honorable dismissal can be issued. The statement indicates that the student withdrew in good standing as far as character and conduct are concerned. If the student has been dropped from the rolls on account of poor scholarship, a statement in such effect may be added to the honorable dismissal.

Students who leave the University by reason of expulsion due to disciplinary action shall be allowed to obtain their academic transcript of record without reference to Dishonorable Dismissal, provided:

1. the students write an application;
2. not less than one school year has elapsed after the effectivity of the expulsion decision;
3. the parties concerned during the period of expulsion have not been involved in any untoward incident affecting the University, or been charged in court after the fiscal's investigation; and,
4. all such applications are subject to Board of Regents action.

BASS RETENTION AND SHIFTING POLICY (As of June 6, 2018)

RETENTION

To uphold academic excellence, facilitate quality instruction, and create a nurturing learning environment through proper program advising, the College of Social Sciences hereby promulgates the following rules effective Academic Year 2018-2019 and thereafter.

1. BA Social Sciences (BASS) students must have a minimum cumulative weighted average of 2.75 for all courses in their major and minor programs including social science core courses.
2. Excluded in the computation are the GE courses in the social science and philosophy domain (e.g., Ethics 1, Hist I/Kas 1, SAS 1, Hist 3/Philo 27/Soc Sci

30) except in the case of BASS History majors where Hist I/Kas 1 is included in the computation.

3. Reckoning begins as soon as students enroll in any course in their major, minor or core curriculum and every semester thereafter. This is a requirement for students to continue enrolling for the first semester, second year of the BASS program.
4. The last reckoning period of evaluation is the semester *before* the student only has the following units remaining in the curriculum (depending on the major and minor combination): BASS Anthropology = 24-33 units; BASS Economics = 21-33 units; BASS History = 24-30 units.
5. A student's cumulative weighted average is determined by computing his/her average at the end of the current semester to include grades in major, minor, and core courses earned in the previous semester/s within the reckoning period. Grades earned during the mid-year are included in the computation for the second semester.
6. A student who fails to obtain a minimum cumulative weighted average of 2.75 shall be put on probation the following semester.
7. A student who fails to reach the required minimum cumulative weighted average of 2.75 at the end of the semester during which the student was put on probation shall be disqualified from that major and/or minor discipline.
8. Upon disqualification from a particular combination, a student may opt to retain the discipline where the cumulative average is at least 2.75. A student can only shift once in his/her major program and once in his/her minor program.
9. For purposes of computation, an outstanding but not lapsed INC is computed as 3.0 until a completion grade has been recorded. All 4s and 5s are

included in the computation of the retention average.

10. For monitoring purposes, the students' average in their major and minor courses shall be computed separately.
11. Departments can impose additional conditions for the retention of their majors.

Additional departmental guidelines:

Department of Economics and Political Science

The following additional conditions for retention apply to all BASS Economics students admitted as freshmen in AY 2018-2019, and all Economics majors thereafter:

1. When the student fails either Econ 101 or Econ 102, the student may continue in the discipline upon the approval of the Discipline faculty of the student's formal written request to continue in the Economics program.
2. When the student fails both Econ 101 and Econ 102, the student is disqualified from the Economics program.
3. The student must have passed Math 100 before enrollment for the first semester, second year.

SHIFTING

The College of Social Sciences allows shifting to majors and minors *only once*. MRR requirements shall be taken into account before the student shall be admitted as a shiftee to the BASS program.

Department of Economics and Political Science

In shifting to the BASS Economics program, the following rules should be observed:

1. If the student has not taken any Economics or Math courses prior to shifting, his UPCAT Math percentile score must at least be 60.
2. If the student has already taken Economics 101 or Economics 102 prior to shifting, he/she must have obtained a minimum

grade of 2.75 in his/her first take of the course.

3. Upon admission into the BASS Economics program, the student will be placed on probationary status and must meet the following condition:
 - a. To earn a minimum grade of 2.75 in Economics 101 and/or Economics 102 during his first semester of taking Economics as a major; or
 - b. To earn a minimum average grade of 2.75 in all Economics courses during his first semester of taking Economics as a major.

Students who fail to meet this condition cannot continue in the BASS Economics program.

In shifting to Political Science as a minor, the following rules should be observed:

1. The student should get a minimum grade of 2.75 in Political Science 100 during his first semester of taking Political Science as a minor;
2. If the student has already taken Political Science 100 prior to shifting, he/she must have obtained a minimum grade of 2.75 in his/her first take.

Department of History and Philosophy

1. Shifting to BASS History is allowed only until the second semester of the student's second year. To be admitted, a student must have a minimum grade of 2.5 in Hist I/Kas 1. A student who has yet to take Hist I/Kas 1 will be admitted provisionally, pending the satisfaction of grade requirement.

Shiftees must obtain an average of 2.5 in all History courses taken in his/her first semester under BASS History so he/she can continue in the program. CSS Retention Policy applies after this probation period.

2. Shifting to Minor in Philosophy is allowed after a student incurs a minimum average grade of 2.5 in the first semester of taking Philosophy courses. Previously taken Philosophy GE's shall also be included in the computation.

Department of Social Anthropology and Psychology

1. On their first semester, students shifting to BASS Anthropology as a major and/or Psychology or Sociology as a minor are required to enrol in Anthropology 100 and/or Psychology 101 or Sociology 101 with the condition that they must obtain a minimum grade of 2.5 in each of these courses. Students who do not meet this grade requirement will not be retained in the program.
2. In the event that an introductory course and/or any other upper level major/minor course has been taken (e.g. as an elective), the minimum grade requirement of 2.5 will be applied to the next courses taken immediately in the semester when the student shifted into the program.

The grade requirement for minor offered by the other departments will be applied.

GRADUATION REQUIREMENTS

No student shall be recommended for graduation unless he/she has satisfied all academic and other requirements prescribed for graduation.

Candidates for graduation who began their studies under a curriculum more than 10 years ago shall be governed by the following rules:

1. Those who had completed all the requirements of the curriculum but did not apply for, nor were granted, the corresponding degree or title shall have their graduation approved as of the date they should have originally graduated.
2. Those who had completed all but two or three subjects required by a curriculum shall be made to follow any of the curricula enforced from the time they first attended the University to the present.

All candidates for graduation must have their deficiencies made up for and their records cleared not later than five weeks before the end of their last

semester, with the exception of those courses in which the student is enrolled in during that semester.

No student shall be graduated from the University unless he/she has completed at least one year of residence work which may, however, be extended to a longer period by the proper faculty. The residence work referred to must be done immediately prior to graduation.

No student who fails to pay the required graduation fee within the specified period set by the University Registrar shall be conferred any title or degree. Such a student may, however, upon request and payment of the necessary fees, be given a certified copy of credentials without specifying completion of the requirements toward any title or degree.

Students may file formal applications as candidates for graduation in the office of the Dean of their respective colleges. Failure to do this will require special permission from the Chancellor and payment of the corresponding fine.

Graduation with Honors

Students who complete their courses with the following absolute minimum weighted average shall be graduated with honors:

Summa Cum Laude	1.20
Magna Cum Laude	1.45
Cum Laude	1.75

provided that all the grades in all subjects prescribed in the curriculum, as well as subjects that qualify as electives, shall be included in the computation of the weighted average grade; provided further that in cases where the electives taken are more than those required in the program, the following procedures will be used in selecting the electives to be included in the computation of the weighted average grade:

1. For students who did not shift programs, the required number of electives shall be selected in chronological order.
2. For students who shifted from one program to another, the electives to be considered shall be selected according to the following order of priority:
 - a. Electives taken in the program where the student is graduating will be selected in chronological order.
 - b. Electives taken in the previous program and acceptable as electives in the second program will be selected in chronological order.

- c. Prescribed courses taken in the previous program which qualify as electives in the second program will be selected in chronological order.

In the case of students graduating with honors in courses whose prescribed length is less than four years, the English equivalent, namely, "With Honors," "With High Honors," and "With Highest Honors," shall be used instead.

Candidates for graduation with honors must have completed in the University of the Philippines at least 75% of the total number of academic units or hours for graduation and must have been in residence therein for at least two years immediately prior to graduation. In the computation of the final average of students who are candidates for graduation with honors, only resident credits shall be included.

Students who are candidates for graduation with honors must have taken during each semester/trimester/quarter less than 15 units of credit, or the normal load prescribed in the curriculum in cases where such normal load is less than 15 units, unless the lighter load was due to justifiable causes such as health reasons, the unavailability of the courses needed in the curriculum to complete the full load, or the fact that the candidate is a working student. If a student has only 15 units remaining in his/her curriculum but one of the courses equivalent to 3 units is offered only the following semester, he/she must enroll in all the remaining 12 units during the current semester, as required of him/her. In this case, his/her chances of graduating with honors shall not be jeopardized.

To justify underloading, the submission of pertinent documents is required, as follows:

1. For health reasons, medical certification to be confirmed by the University Health Service.
2. For unavailability of courses, certification by the major adviser and copy of schedule of classes.
3. For employment, copy of payroll and appointment papers indicating among others duration of employment.

It is the responsibility of the student to establish beyond reasonable doubt the veracity of the cause(s) of his/her light loading. Documents submitted to establish the cause(s) of his/her light loading, such as certificate of employment and /or medical certificate, must be sworn to. These documents must be submitted during the semester of underloading.

HONORIFIC ACADEMIC AWARDS

University Academic Awards

At the end of the semester any undergraduate student who obtains a weighted average of 1.45 or better is given this honorific academic award. University academic awardees are listed in the President's List of Scholars.

College Academic Awards

Any undergraduate student who, not being classed as a University Academic awardee, obtains at the end of the semester a weighted average of 1.75 or better is given this honorific academic award. College academic awardees are listed in the Dean's List of Scholars.

Additional Requirements for Honorific Awards

In addition to the general weighted average prescribed, a student must have taken at least 15 units of academic credit or the normal load prescribed during the previous semester; and, must have no grade below "3" in any academic or non-academic subject. Grades of "Inc" must be completed by the end of the semester. (The end of the first semester is the day before the registration for the second semester. The end of the second semester is commencement day.)

These honorific awards shall last only for one semester, renewable for the succeeding semester if the student meets the prescribed conditions. Honorific awards do not entitle the holders to any tuition fee waiver, either partial or full.

SECOND BACCALAUREATE DEGREE

Only one baccalaureate degree may be conferred at a time. A holder of a University of the Philippines bachelor's degree may earn another bachelor's degree upon the successful completion of at least 36 additional units prescribed by a discipline, after the previous degree.

COMMENCEMENT EXERCISES

Attendance at general commencement exercises shall be optional. Graduating students who choose not to participate in the general commencement exercises must so inform their respective deans or their duly designated representatives at least ten days before the commencement exercises.

Graduating students who absent themselves from the general commencement exercises shall obtain their diplomas, or certificates, and transcript of records from the Office of the University Registrar provided that they comply with the above provision and upon presentation of the receipt of payment of graduation fee and student's clearance.

Academic Costumes

Candidates for graduation with degrees or titles which require no less than four years of collegiate instruction shall be required to wear academic costumes during the baccalaureate service and commencement exercises in accordance with the rules and regulations of the University.

TRANSCRIPTS

Student records are confidential and information is released only at the request of the student or of appropriate institutions. "Partial" transcripts are not issued. Official transcripts of records obtained from other institutions and which have been submitted to the University for admission and/or transfer of credit become a part of the student's permanent record and are issued as true copies with the UP transcript.

Application for transcript of records should be accompanied by a student clearance. Clearance should be applied for immediately after the last semester/trimester/term of enrollment.

FACULTY

Department of Economics and Political Science

BOQUIREN, ARTURO C.

Assistant Professor of Economics
B.A., M.A., University of the Philippines, 1989, 1999

CIENCIA, ALEJANDRO N. JR.

Associate Professor of Political Science
B.A., M.A., Ph.D., University of the Philippines, 1987, 1996, 2010

COLONGON, ARELLANO A. JR.

Associate Professor of Political Science
B.A., M.A., University of the Philippines, 1987, 1994

COSTALES, ACHILLES C.

Associate Professor of Economics
A.B., Maryhurst Seminary, 1976;
M.A., University of Sto. Tomas, 1979;
Ph.D., University of the Philippines, 1991

CARICATIVO, RUEL D.

Instructor in Political Science
B.A., University of the Philippines, 2011

CRUZ, GLADYS A.

Associate Professor of Economics
A.B., M.A., University of the Philippines, 1984, 1990

DE LA CRUZ, RAINIER RIC B.

Assistant Professor of Economics
B.A., *magna cum laude*, M.A., University of the Philippines, 2011, 2016

MENDOZA, LORELEI C.

Professor of Economics
A.B., *magna cum laude*, M.A.,
University of the Philippines, 1976, 1981;
M.A. (*with distinction*), Ph.D.,
Katholieke Universiteit te Leuven, 1988, 1997

PEÑALBA, MAILEENITA A.

Assistant Professor of Political Science
B.A., M.A., University of the Philippines, 2001, 2012

Department of History and Philosophy

ABAYAO, LEAH E.

Associate Professor of History
B.A., M.A., Ph.D., University of the Philippines, 1992, 1999, 2010

AGRA, KELLY LOUISE REXZY P.

Assistant Professor of Philosophy
A.B., *cum laude*, M.A., *magna cum laude*,
University of Sto. Tomas, 2012, 2016

BUMATAY, VLADMIRE KEVIN D.

Instructor in Philosophy
B.A., *magna cum laude*, University of the Philippines, 2015

DELOS REYES, CHARITA A.

Associate Professor of History
A.B., *magna cum laude*, M.A., *cum laude*, Saint Louis University, 1989, 2001
M.A., Ph.D., University of the Philippines, 2004, 2014

ELUMBRE, ADONIS RAMY L.

Assistant Professor of History
B.A., *cum laude*, University of the Philippines, 2007
Int.M., Universiti Malaya, 2014

FLORENDO, MA. NELA B.

Professor of History
B.S., M.A., Ph.D., University of the Philippines, 1979, 1984, 1992

LUGA, JOSE MATHEW P.

Instructor in History
B.A., University of the Philippines, 2012

MENDOZA, OLIVIA S.

Instructor in Philosophy
B.A., *magna cum laude*, University of the Philippines, 2014

MUÑOZ, ANALYN B.

Assistant Professor of History

B.A., *cum laude*, M.A., University of the Philippines, 2005, 2012

ROVILLOS, RAYMUNDO D.

Professor of History

B.A., M.A., Ph.D., University of the Philippines, 1985, 1996, 2005

YOSHIY II, FRANZ JOSEPH C.

A.B., *magna cum laude*, University of Sto. Tomas, 2017

Department of Social Anthropology and Psychology

BALMORES-PAULINO, ROZEL S.

Assistant Professor of Psychology

B.A., *cum laude*, M.A., M.A., Ph.D., University of the Philippines, 1997, 2002, 2013, 2016

BRETT, JUNE PRILL

Professor Emeritus of Anthropology

A.B., M.A., Ph.D., University of the Philippines, 1971, 1975, 1987

CARIÑO, JESSICA K.

Professor of Anthropology

A.B., M.A., University of the Philippines, 1977, 1985

DIAZ, MARIA ANA B.

Assistant Professor of Psychology

B.S., University of the Philippines, 1982; M.S., Saint Louis University, 1995

DIAZ, VICTORIA LOURDES C.

Associate Professor of Anthropology

A.B., *cum laude*, University of the Philippines, 1984; M.S., Purdue University, 1988

INTAL, RAYMOND M.

Instructor in Social Anthropology

B.A., *magna cum laude*, University of the Philippines, 2014

FLORENDO, MARIA NANCY B.

Associate Professor of Psychology

A.B., M.A., University of the Philippines, 1982, 1990; Ph.D., Ateneo de Manila University, 2008

JOSEF, JENNIFER C.

Assistant Professor of Sociology

B.A., M.A., University of the Philippines, 1989, 1997

MICKLAY, GRAZIELLE K.

Instructor in Social Anthropology

B.A., University of the Philippines, 2012

RAM, EVANGELINE F.

Assistant Professor of Psychology

B.S., M.S., Saint Louis University, 1980, 1987

RAMOS, TALA AURORA S.

Assistant Professor of Anthropology

B.A., M.A., Ph.D., University of the Philippines, 1986, 1990, 2016

SALVADOR-AMORES, ANALYN A.

Associate Professor of Social Anthropology B.A.,

M.A., University of the Philippines, 1995, 2002;

MPhil., DPhil., University of Oxford, 2008, 2011

SAN LUIS, MARIA CECILIA R.

Associate Professor of Sociology

B.A., M.A., Ph.D., University of the Philippines, 1987, 1997, 2015

Institute of Management

ABANSI, CORAZON L.

Associate Professor of Management

B.S., M.S., M.A., Ph.D.,

University of the Philippines, 1980, 1989, 1994, 1997

CORPUZ, DIANNE A.

Assistant Professor of Management

B.S. Saint Louis University, 2006; M.B.A., University of Cordilleras, 2010

DACANAY III, SANTOS JOSÉ O.

Professor of Management

B.S.B.A., Dip. U.R.P., Ph.D.,

University of the Philippines, 1995, 2000, 2007; MBA, Saint Louis College, 1998

DE GUZMAN, RENEN SZILARDO C.

Assistant Professor of Management

B.S., *cum laude*, M.M., University of the Philippines, 2009, 2017

PALAGANAS, ERLINDA C.

Professor of Management

B.S., *cum laude*, UERMMMC, 1979;

M.P.H., University of the Philippines, 1985;

Ph.D., University of Sydney, 1996

SIY, JAY STEPHEN C.

Assistant Professor of Management

B.S., University of Luzon, 2000;

M.M., University of the Philippines, 2006

Name: _____
 SAIS No: _____
 Sem & AY Admitted _____
 Adviser _____

Student No: _____
 E-mail: _____
 Contact No: _____

B.A. Social Sciences

Major: _____
 Minor: _____

FIRST YEAR

First Semester	Units	Sem & AY Taken	Grade	Second Semester	Units	Sem & AY Taken	Grade
Total				Total			

SECOND YEAR

First Semester	Units	Sem & AY Taken	Grade	Second Semester	Units	Sem & AY Taken	Grade
Total				Total			

THIRD YEAR

First Semester	Units	Sem & AY Taken	Grade	Second Semester	Units	Sem & AY Taken	Grade
Total				Total			

FOURTH YEAR

First Semester	Units	Sem & AY Taken	Grade	Second Semester	Units	Sem & AY Taken	Grade
Total				Total			

REVISIONS AND UPDATES

